

WIRELESS PROFESSIONAL EMERGENCY LIGHTING

Always Monitoring, Always Compliant

CONTENTS

Section:

Page:

Introduction
Our Manufacturing Partner
System Overview
System Design – Single Building
System Design – Large Building or Campus
Wireless Professional – Floor Configuration
Wireless Professional – Floor Mapping
Wireless Professional – Automatic Email Reporting
Wireless Professional – Multi Building Management
Wireless Professional – Luminaire Options
Performance Series Luminaires
Design Series Luminaires
Network Equipment
Our Support Services
Contact Us

3
4
5
6
7
8
9
10
11
12
13-25
26-38
39-42
43
44

INTRODUCTION

Entek delivers innovative, reliable, and sustainable solutions designed to enhance the performance and efficiency of modern buildings and ensure seamless integration, regulatory compliance, and long-term value for our clients. Backed by over a century of combined industry experience, our team partners with clients, designers, and contractors to deliver solutions across diverse industry sectors.

Partnering with leading manufacturers, we offer a comprehensive end-to-end service—from initial design and planning to final project delivery working closely with all stakeholders to ensure the requirements for each project is met.

Our commitment extends beyond installation. We provide ongoing service, maintenance, and dedicated support to guarantee lasting performance and reliability. With a client-focused approach and deep technical expertise, Entek delivers high-quality solutions tailored to the evolving demands of modern buildings.

Wireless Professional-System Features

- ✓ **Wireless connectivity**
- ✓ **Always monitoring system changes**
- ✓ **Fully scalable up to 50,000 luminaires**
- ✓ **Scheduled function and capacity testing**
- ✓ **No inaccessible luminaires during testing**
- ✓ **Free cloud monitoring software**

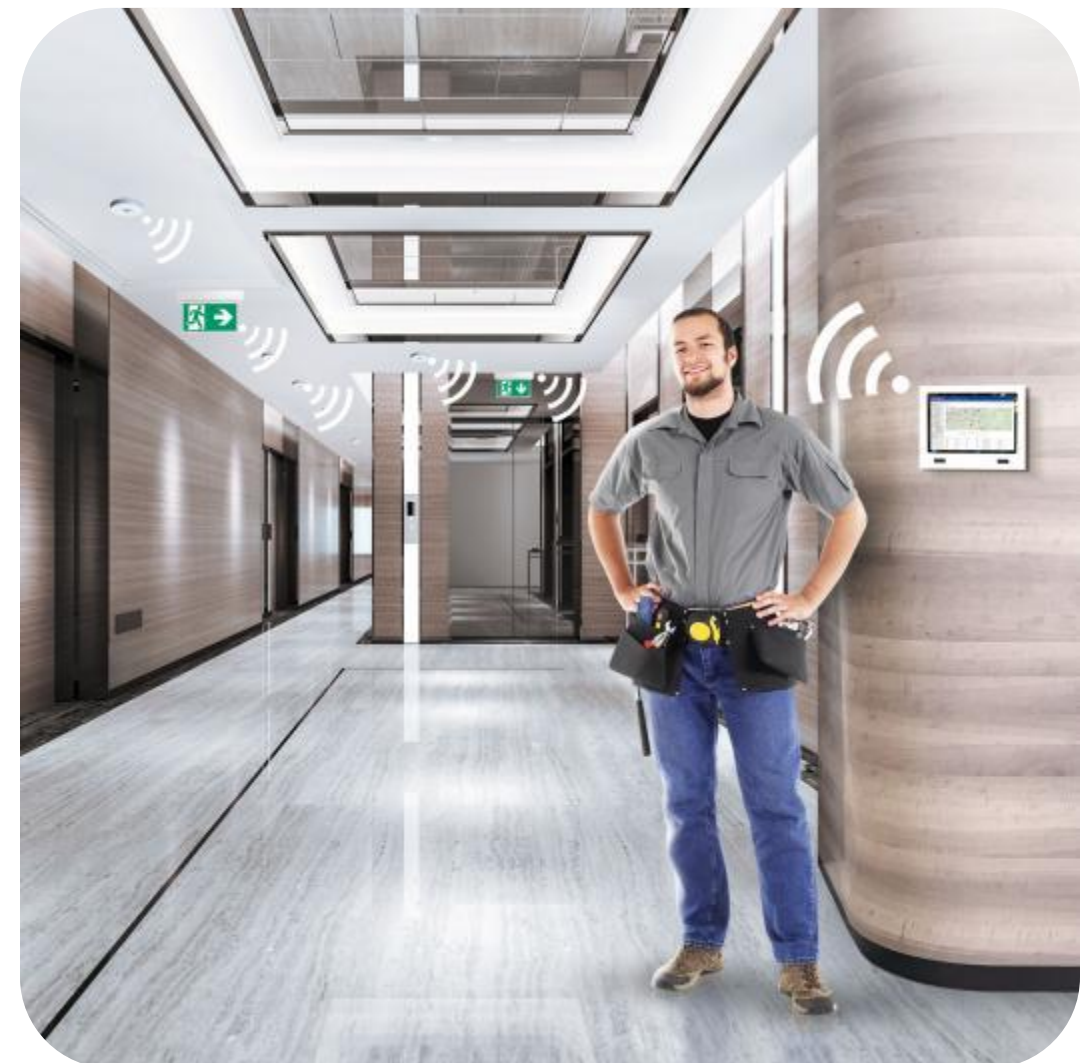
Wireless Professional-System Benefits

- ✓ **Reduced installation costs**
- ✓ **Reduced operational costs**
- ✓ **Realtime notifications of system changes**
- ✓ **Simplified reporting with cloud-based log**
- ✓ **Always monitoring & always compliant**



In this brochure, we outline how WIRELESS PROFESSIONAL Emergency Lighting helps you to:

- Ensure your emergency lighting is always compliant with I.S. 3217:2013+A1:2017
- Substantially reduce the cost of annual inspections
- Simplify your compliance and reporting
- Mitigate Health & Safety risk
- Visually map emergency luminaires on your floor plan



WIRELESS PROFESSIONAL

OUR MANUFACTURING PARTNER



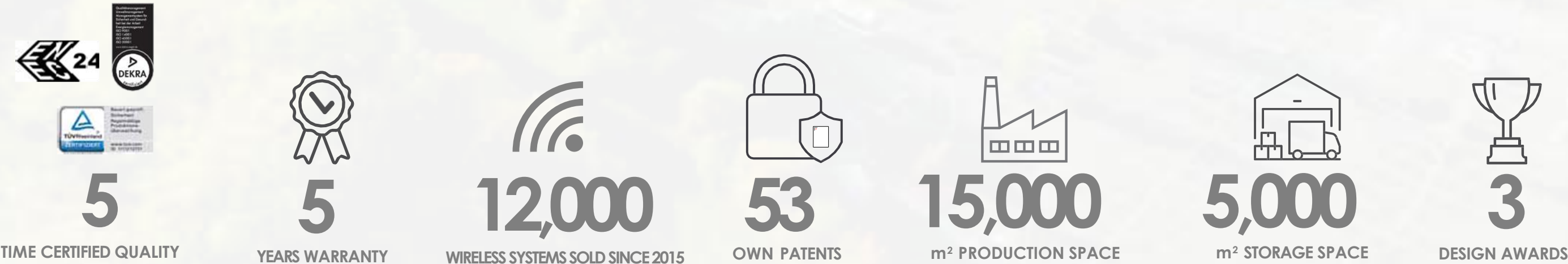
For more than four decades, RP Group, a German based specialist manufacturer of emergency lighting, has been setting industry standards in building safety through innovative, design-led solutions.

As the inventor of the tapered escape sign luminaire, RP Group is recognised as one of Europe's leading emergency lighting manufacturers and was among the first to integrate energy-efficient LED technology into luminaires.

Driven by a commitment to innovation and a willingness to challenge conventional boundaries, RP Group aligns seamlessly with Entek's vision. Our partnership is built on a shared focus on delivering intelligent, high-quality, and sustainable emergency lighting solutions for modern buildings.

Discover how Entek and RP Group can enhance safety and performance in your next project. Get in touch with our team today.

RP GROUP IN NUMBERS



WIRELESS PROFESSIONAL SYSTEM OVERVIEW

Wireless Professional makes controlling and monitoring self-contained emergency lighting simple and efficient. Installation is quick and straightforward, requiring only a standard 230V AC power supply for each luminaire. Once installed, the wireless system automatically establishes communication for monitoring and control.

Wireless Professional operates as a mesh-based wireless system, allowing each luminaire to communicate with neighbouring luminaires as well as the system controller. This intelligent network ensures that data is always routed through the most reliable path, automatically finding an alternative route back to the controller if a direct connection is unavailable.

Each luminaire communicates using the European-approved 868 MHz frequency, continuously reporting its own status and the status of other luminaires within the network. With an indoor range of 30 metres and strong signal penetration, the system maintains reliable communication even through reinforced concrete floors between levels.

The wireless system supports up to 1,000 devices per central control unit, including all luminaires, repeaters, and I/O modules connected to the system. Standard features include integrated timer functions and full network capability.

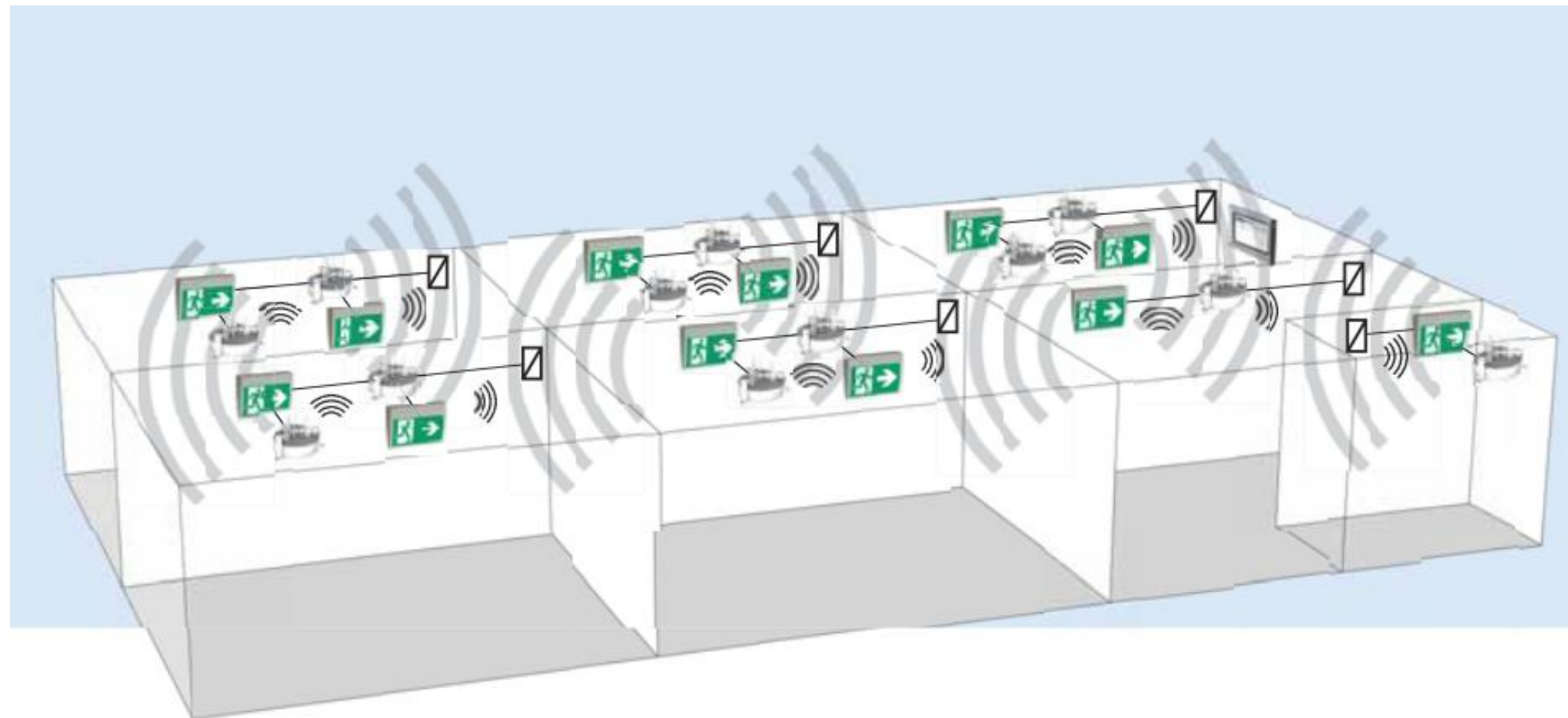
Using a self-organising, mesh network, each luminaire automatically communicates with all reachable nodes, including other luminaires, repeaters, and the central control unit. This intelligent structure ensures reliable communication without manual configuration.

For larger installations or multi-site campus installations multiple central control units can be networked together over a LAN using additional equipment. This allows the system to scale far beyond a single network, supporting up to 50,000 luminaires across a connected system.

The central unit software integrates seamlessly with existing Windows systems and supports the storage of detailed building floor plans. Registered luminaires can be positioned on digital layouts and are displayed with real-time operational status, enabling clear system visibility and efficient management.

Wireless Professional enables remote control of luminaires via radio. Automated function and capacity tests can be scheduled at dedicated times and dates, with results securely logged for later review and email notifications issued when attention is required. Intelligent scheduling also allows emergency lighting in low-use areas to be placed into standby mode during periods such as weekends, reducing energy consumption while maintaining full safety and security compliance. Maintained luminaires can be dimmed, making the system ideal for environments where high lumen light levels may be disruptive, such as theatres, cinemas, and auditoriums.

Designed for discretion, Wireless Professional luminaires maintain a clean, architectural appearance. Even when installed in stainless steel or aluminium housings, the wireless technology operates reliably without visible antennas, ensuring performance without compromising aesthetics.



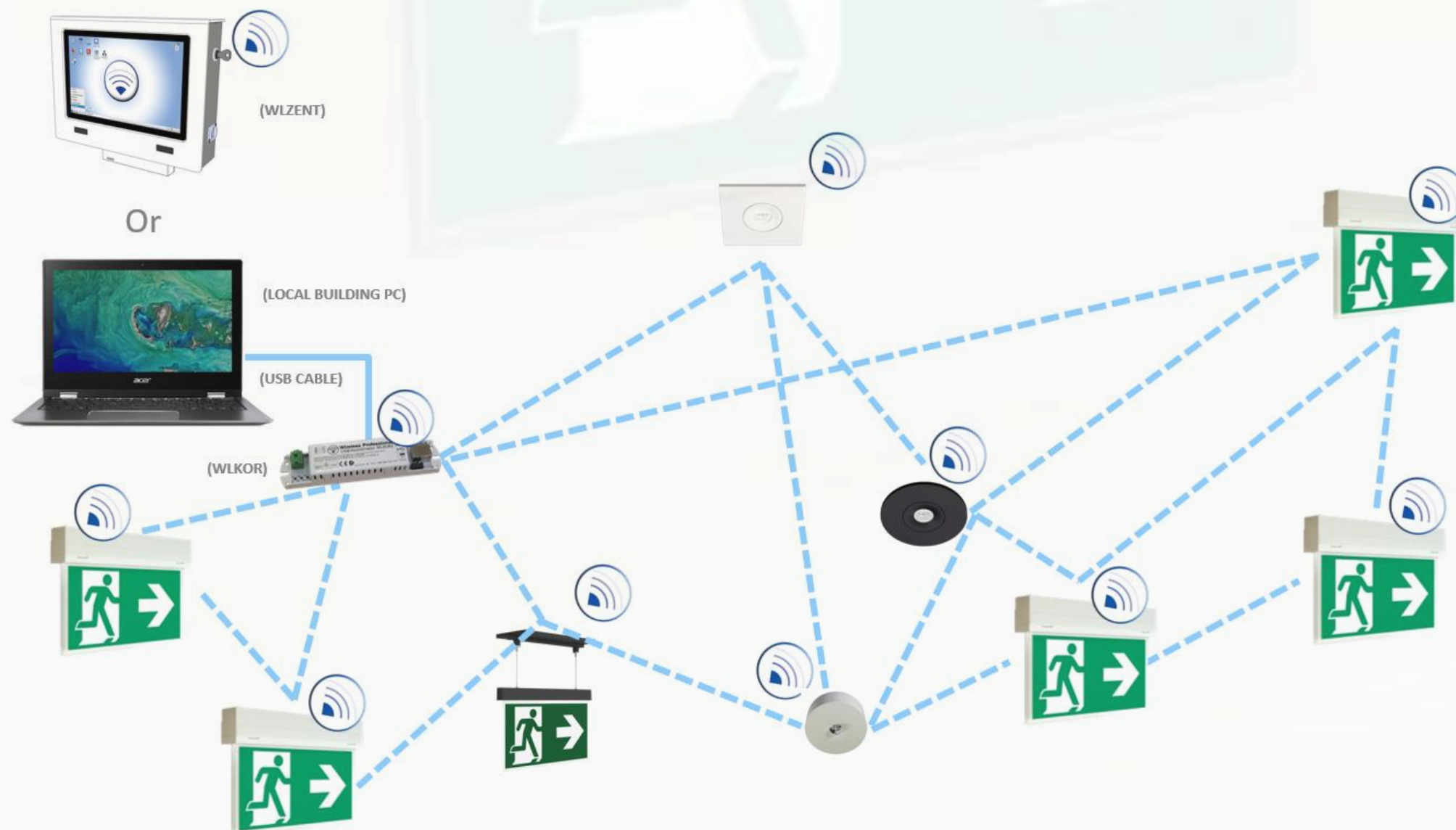
SYSTEM DESIGN

SINGLE BUILDING

Typical single building application - Up to 1,000 Luminaires

Below is a typical system configuration for standalone buildings requiring fewer than 1,000 emergency luminaires. The system can be implemented using either a USB coordinator (WLKOR) connected to a locally networked PC, or a networked Linux-based touchscreen controller (WLZENT) where a central PC is not available.

If the building owner prefers to keep either device isolated from the main network, connectivity to the Lightlink cloud can be maintained via a third-party 4G or 5G network service, provided by others. This enables remote reporting of system status changes and automated test results without direct integration into the primary network.



SYSTEM DESIGN

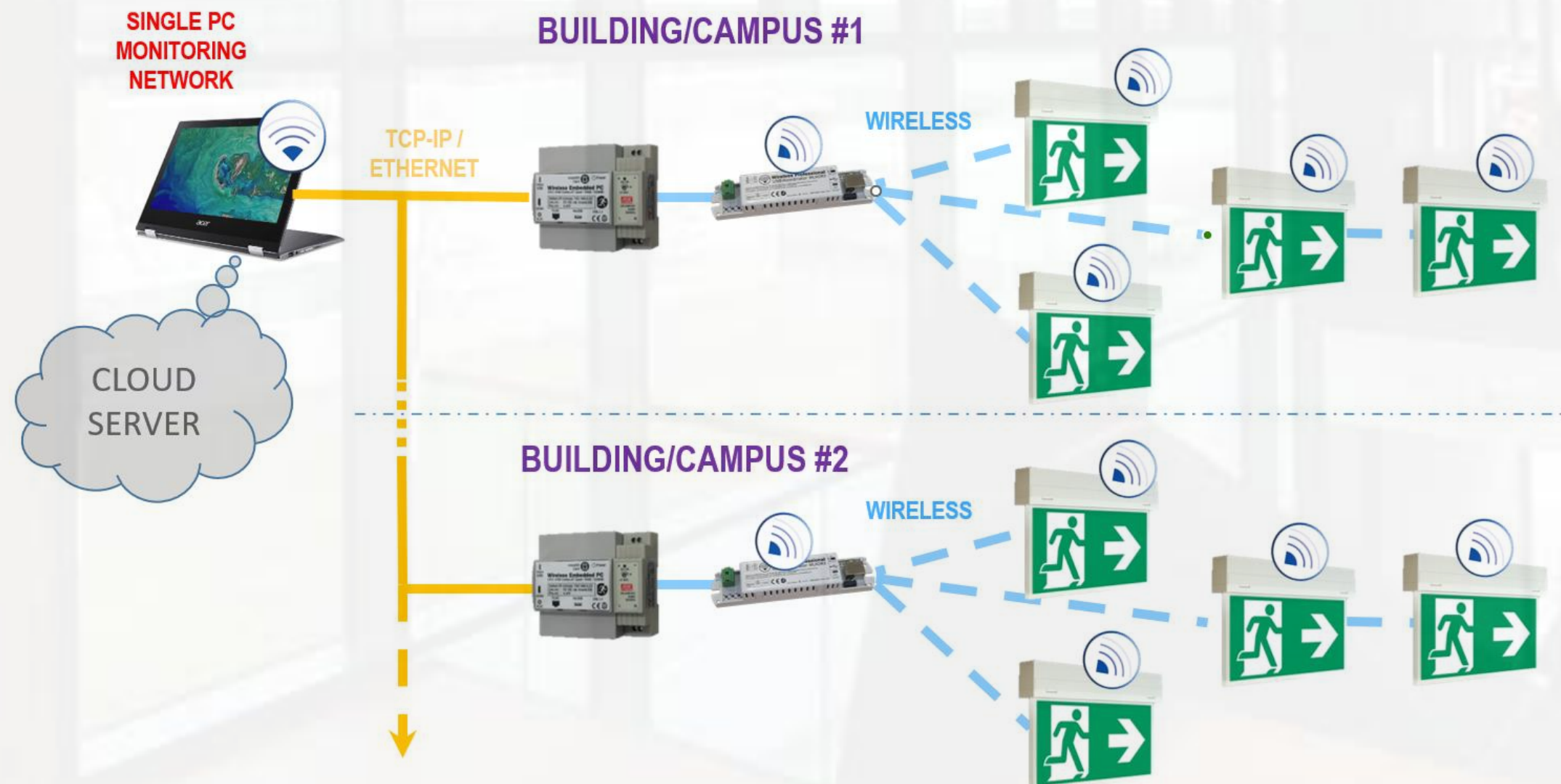
LARGE BUILDING OR CAMPUS

Typical large building or campus application - Up to 50,000 Luminaires

Below is a typical system configuration for large or campus-style buildings. The system is implemented using an embedded DIN-rail-mounted Linux networked PC (WLCPC) in conjunction with a local USB coordinator (WLKOR). Depending on the size and layout of a large building, one or multiple WLCPC units may be deployed.

Each WLCPC is connected to the local area network and is centrally accessible via a designated PC, which also provides secure access to the Lightlinx cloud server for system monitoring, reporting, and management.

If the building owner prefers to keep either device isolated from the main network, connectivity to the Lightlinx cloud can instead be maintained through a third-party 4G or 5G network service, provided by others. This approach allows remote reporting of system status changes and automated test results without direct integration into the primary network.



WIRELESS PROFESSIONAL

FLOOR CONFIGURATION

Once the luminaires are installed and powered, a system scan is performed to automatically identify all wireless emergency luminaires within range. Each luminaire is supplied with a unique address, with one label fitted to the luminaire and a second label provided for use during floor plan mapping.

The system scan displays both the luminaire type and its unique address. Within the Wireless Professional software, luminaires can then be assigned to specific locations and named by the installer, with the option to manually rename units at any time. This interface also provides clear status information, including whether the luminaire is maintained or non-maintained, any active timers, and the current switching state.

- Demo Case [not connected]

File Options Help

English

Help

GeneralAlarm ListGroupsMapsEmailInstallationNetwork InformationDistributor

OKErrorTestBlockedUpdatingMasked

Save System Data

Configure GroupsTestTimerRemote FacilitiesSystem

MaintainedNon-maintainedSwitching State NormalSwitching State ModifiedNot SwitchableTimerIO Box

Find New Devices...

Registered nodes

| Name | Address | Status | No. Luminair | No. Repeater | No. IO Boxes |
|----------------------|---------|--------|--------------|--------------|--------------|
| Demo Case | | IO | 9 | 0 | 1 |
| IO Interface | U4VM | | | | |
| Left | | | 3 | 0 | 0 |
| IL Series Escape Lum | 1CRN | | | | |
| IL Series Open | U308 | | | | |
| KSC Exit Left | WF65 | | | | |
| Remote | | | 3 | 0 | 0 |
| KCD Exit Corridor | 2DF6 | | | | |
| KCW Escape | 3UPU | | | | |
| KDU Exit | 650S | | | | |
| Right | | | 3 | 0 | 0 |
| DO Right | EQ7L | | | | |
| KMB Right | C8J1 | | | | |
| KMU Exit Right | GSEC | | | | |

Unknown nodes

Address

Luminaires: 0

Repeaters: 0

IO Boxes: 0

WIRELESS PROFESSIONAL FLOOR MAPPING

Once all luminaires have been scanned and correctly labelled, a JPEG floor plan can be uploaded into the Wireless Professional software. The installer can then drag and position each luminaire onto its correct location, creating a clear visual representation of both the floor layout and live system status.

If a fault occurs, the affected luminaire can be quickly identified on the floor plan, allowing issues to be resolved efficiently and with minimal downtime and cost to the end user.

File Options Help

The screenshot displays the 'Wireless Professional' software interface. At the top, there is a blue header bar with the 'Wireless Professional' logo on the left and a language dropdown menu set to 'English' on the right. Below the header, a navigation bar contains tabs for 'General', 'Alarm List', 'Groups', 'Maps', 'Email', 'Installation', 'Network Information', and 'Distributor'. The 'Maps' tab is currently selected. Below the navigation bar, there is a status bar with icons for 'OK' (green circle), 'Error' (red circle with X), 'Test' (blue gear), 'Blocked' (orange diamond), 'Updating' (yellow lightning bolt), and 'Masked' (grey circle). To the right of the status bar are buttons for 'Reset Node Positions', 'Toggle Map View', and 'Save System Data'. Below the status bar, there is a section for 'Name' with a dropdown menu showing 'IO Interface (U4VM)'. The main area of the interface is a large window displaying a detailed floor plan map. The map is titled 'Overall Map' and shows a complex layout of rooms and corridors. Various rooms are labeled, including 'TOILET', 'PANTY', 'RECEPTION AREA', 'ST-11', 'ST-12', 'ST-13', 'ST-14', 'ST-15', 'ST-16', 'ST-17', 'ST-18', 'ST-19', 'ST-20', 'ST-21', 'ST-22', 'ST-23', 'ST-24', 'ST-25', 'ST-26', 'ST-27', 'ST-28', 'ST-29', 'ST-30', 'ST-31', 'ST-32', 'ST-33', 'ST-34', 'ST-35', 'ST-36', 'ST-37', 'ST-38', 'ST-39', 'ST-40', 'ST-41', 'ST-42', 'ST-43', 'ST-44', 'ST-45', 'ST-46', 'ST-47', 'ST-48', 'ST-49', 'ST-50', 'ST-51', 'ST-52', 'ST-53', 'ST-54', 'ST-55', 'ST-56', 'ST-57', 'ST-58', 'ST-59', 'ST-60', 'ST-61', 'ST-62', 'ST-63', 'ST-64', 'ST-65', 'ST-66', 'ST-67', 'ST-68', 'ST-69', 'ST-70', 'ST-71', 'ST-72', 'ST-73', 'ST-74', 'ST-75', 'ST-76', 'ST-77', 'ST-78', 'ST-79', 'ST-80', 'ST-81', 'ST-82', 'ST-83', 'ST-84', 'ST-85', 'ST-86', 'ST-87', 'ST-88', 'ST-89', 'ST-90', 'ST-91', 'ST-92', 'ST-93', 'ST-94', 'ST-95', 'ST-96', 'ST-97', 'ST-98', 'ST-99', 'ST-100'. The map also shows various fixtures and equipment, such as desks, chairs, and lighting fixtures. A scale bar at the top left of the map indicates a zoom level of 122%.

WIRELESS PROFESSIONAL

AUTOMATIC EMAIL REPORTING

Upon completion of a scheduled function or capacity test, or in the event of a change in system status such as a power failure, the system automatically issues an email notification via the Lightlinx cloud to the appointed building manager.

This ensures that key stakeholders are kept fully informed of the status of the emergency lighting system at all times rather than after an engineer's inspection, which is often the case.

By providing timely alerts and clear reporting, any issues identified can be addressed quickly and efficiently, supporting proactive maintenance, minimising disruption, and maintaining ongoing compliance with safety requirements.

LIGHTLINX®

One or More Events Have Occurred

Project:

ENTEK TEST - PROFESSIONAL,

Project Type:

Wireless Professional

Last Updated:

7/2/2025 7:16:27 AM

Monitoring Profile:

PETER PROFESSIONAL

Opportunity:

Event notification (see event list below)

Email Created:

7/2/2025 7:17:02 AM

Events

7/1/2025 4:10:55 PM

WirelessProfessionalCentral

🔗

System shutting down

7/1/2025 4:07:35 PM

WirelessProfessionalCentral

🔗

Group changes switching state via PC program (on)

7/1/2025 4:07:35 PM

WirelessProfessionalCentral

🔗

Group changes switching state via PC program (off)

7/1/2025 4:07:00 PM

—

🔗

A notification email was sent to INFO@ENTEK.IE due to the occurrence of monitored events (monitoring profile name: PETER PROFESSIONAL)

7/1/2025 4:04:46 PM

WirelessProfessionalCentral

🔗

System Finished Test

7/1/2025 4:04:38 PM

Wall Mount Box

🔗

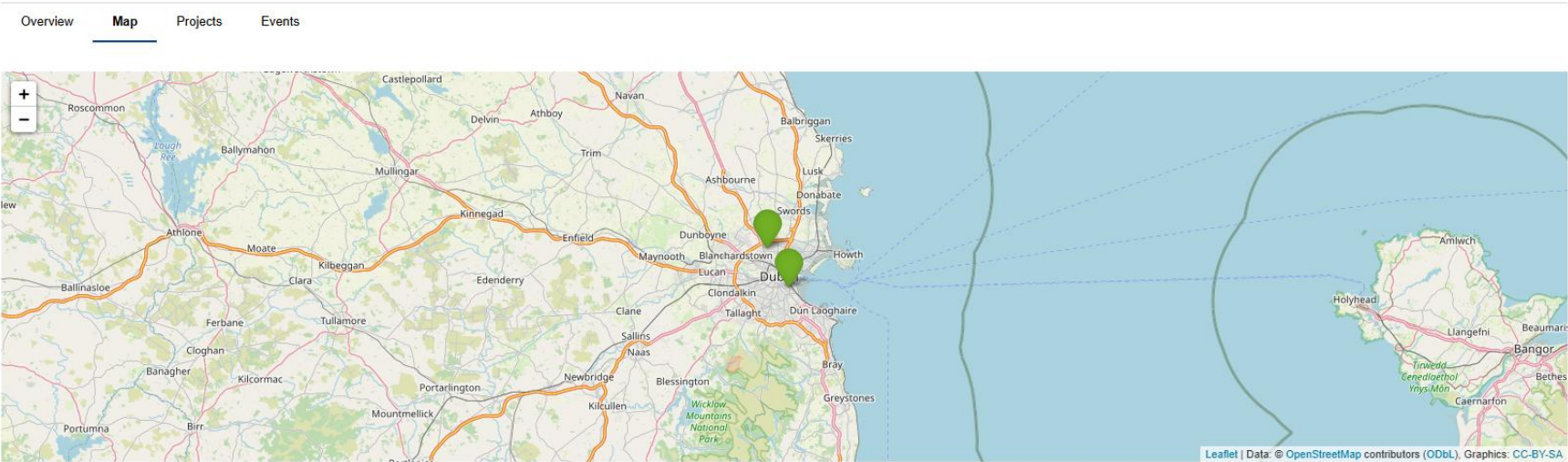
Luminaire finishes function test

7/1/2025 4:04:36 PM

Ceiling Spot

🔗

Luminaire finishes function test



LIGHTLINX

WIRELESS PROFESSIONAL MULTI BUILDING MANAGEMENT

For facilities management teams responsible for multi-building or campus environments, the Lightlinx cloud software provides a centralised platform for overseeing multiple sites simultaneously. Users can monitor the real-time status of emergency lighting systems across all connected buildings from a single interface, ensuring full visibility and control.

The system continuously provides live status updates and clearly highlights any faults or irregularities as they occur, enabling rapid response and proactive maintenance. This approach reduces downtime, improves compliance, and supports efficient management of large or geographically distributed estates.

LIGHTLINX



WIRELESS PROFESSIONAL LUMINAIRE OPTIONS

A comprehensive escape lighting solution is essential to modern building safety, delivering confidence, clarity, and compliance when it matters most. The Wireless Professional portfolio offers a complete range of emergency luminaires designed to meet all escape lighting requirements while complementing the architectural intent of the space.

The range includes solutions for:

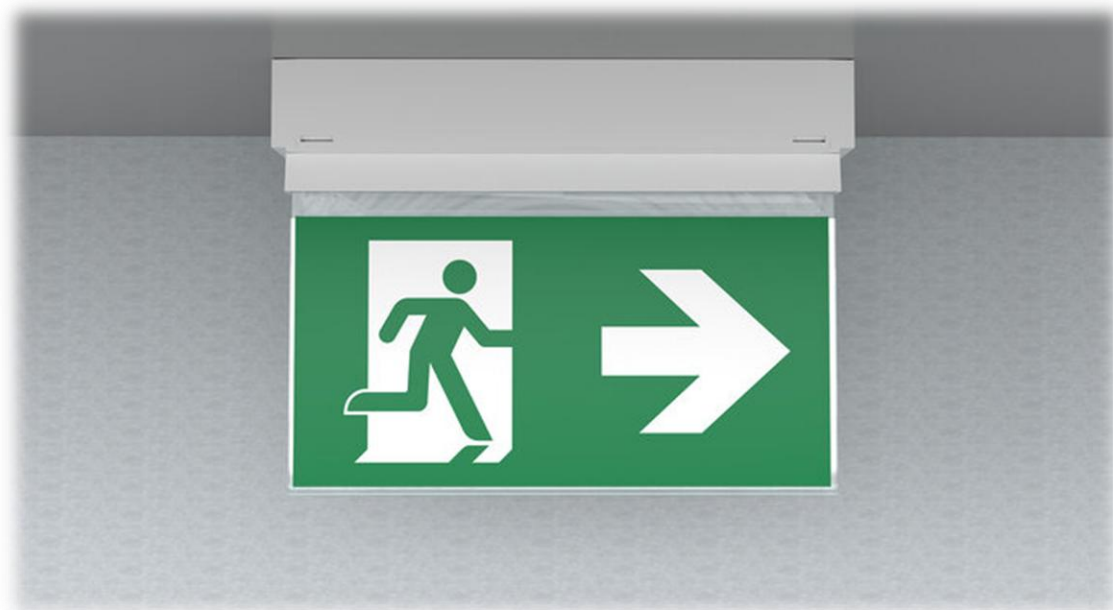
- **Escape route lighting** to clearly define corridors, stairways, and passageways, guiding occupants safely to exits during power failure
- **Exit sign lighting** to ensure escape signage always remains highly visible and easily identifiable
- **Open area or anti-panic lighting** to provide uniform illumination in large spaces, reducing disorientation and supporting safe movement
- **High-risk task area lighting** to enable critical shutdown procedures in hazardous environments prior to evacuation
- **Stairway and level change lighting** to enhance visibility at steps, ramps, and changes in floor level, reducing the risk of accidents

Beyond its advanced wireless monitoring, automated testing, and reporting capabilities, Wireless Professional is available in two complementary luminaire ranges. Both ranges can work seamlessly within the same system, allowing the appropriate solution to be selected for front-of-house or back-of-house areas without compromise.

The Performance Series offers clean, white luminaires designed to meet the demands of standard applications efficiently and reliably.

For projects where aesthetics are as important as performance, the Design Series delivers architectural emergency lighting solutions with a refined, high-quality finish. Ideal for premium interiors, the Design Series is available in white, anthracite, and stainless steel, allowing emergency lighting to integrate seamlessly into sophisticated architectural environments without compromise.

PERFORMANCE SERIES



DESIGN SERIES



WIRELESS PROFESSIONAL

PERFORMANCE SERIES



RECESSED CEILING SPOT EMERGENCY LIGHT



| | | |
|----------|---------------------------------------|--------------------|
| IP20 | 5 YEAR WARRANTY | 3 HOUR BATTERY |
| DIMMABLE | MAINTANED OR NON MAINTAINED OPERATION | INSULATION CLASS 2 |

Part Reference: ILEL423WL
Self-contained emergency light

A discreet polycarbonate emergency luminaire designed for recessed ceiling installation, blending seamlessly into its surroundings.

The in-ceiling housing is quick and easy to install, secured at three points with screws. An integrated strain relief is included to safely hold the connection cables.

Power is supplied via the mains within the recessed housing. Once closed, the luminaire is energised through contact plugs, greatly simplifying installation and enabling a convenient connection despite its compact size.

An innovative integrated lens holder with a rapid-fit mechanism allows flexible use of different lens types. By selecting the appropriate lens, light distribution can be precisely tailored to the application, ensuring compliance with all relevant standards. Each luminaire is supplied with a round lens and a hall lens, enabling optimal adaptation to the mounting environment. Optional lenses, including spotlight, beam, and H lenses, are also available upon request.

| TECHNICAL DATA | |
|----------------------------------|---|
| Luminaire type | Emergency Light |
| Mounting | Ceiling mounting |
| Pictograph | No |
| Illuminant | LED |
| Housing material | Polycarbonate |
| Housing color | White |
| Protection type (IP) | IP20 |
| Impact resistance (IK) | ≥ 3 |
| Certification | WEEE, CE, 5 years warranty |
| Insulation class | 2 |
| Supply | Self-contained |
| Monitoring | Wireless Professional (WL) |
| Battery Duration | 3 h |
| Battery | LiFePO4 3,2 V/3,3 Ah |
| Operating mode | Non-maintained or maintained |
| Input voltage AC | 230 V |
| Input frequency | 50 / 60 Hz |
| Power max. | 3.4 W |
| Power maintained | 2.3 W |
| Power non-maintained | 0.4 W |
| Ambient Temperature | Maintained -5 °C to 30 °C / Non Maintained -5 °C to 40 °C |
| Depth | 84 mm |
| Diameter | 122 mm |
| Installation dimensions Diameter | 105 mm |
| Connection cross-section | Up to 2.5 mm² |
| Switching input | Yes |
| Emergency light blocking | No |
| Battery Connection | Pluggable Connector |
| Dimming Function | Yes |
| Luminous Flux Mains | 130 lm |
| Luminous Flux Emergency | 250 lm |

SURFACE CEILING SPOT EMERGENCY LIGHT



IP40

5 YEAR WARRANTY

3 HOUR BATTERY

DIMMABLE

MAINTANED OR NON MAINTAINED OPERATION

INSULATION CLASS 2

Part Reference: ILDL423WL
Self-contained emergency light

A discreet polycarbonate emergency luminaire designed for surface mounting, offering a clean, unobtrusive appearance that blends seamlessly into its environment.

The surface-mounted base is quick and simple to install and houses the mains supply terminals. The luminaire unit clips into place without tools and remains free from mains voltage when removed, ensuring safe and straightforward installation and maintenance.

An innovative integrated lens holder with a rapid-fit mechanism allows flexible use of different lens types. By selecting the appropriate lens, light distribution can be precisely tailored to the application, ensuring compliance with all relevant standards.

Each luminaire is supplied with a round lens and a hall lens, enabling optimal adaptation to the mounting environment. Optional lenses, including spotlight, beam and H lenses, are also available upon request.

| TECHNICAL DATA | |
|--------------------------|---|
| Luminaire type | Emergency Light |
| Mounting | Ceiling mounting |
| Pictograph | No |
| Illuminant | LED |
| Housing material | Polycarbonate |
| Housing color | White |
| Protection type (IP) | IP40 |
| Impact resistance (IK) | ≥ 3 |
| Certification | WEEE, CE, 5 years warranty |
| Insulation class | 2 |
| Supply | Self-contained |
| Monitoring | Wireless Professional (WL) |
| Battery Duration | 3 h |
| Battery | LiFePO4 3,2 V/3,3 Ah |
| Operating mode | Non-maintained or maintained |
| Input voltage AC | 230 V |
| Input frequency | 50 / 60 Hz |
| Power max. | 3.4 W |
| Power maintained | 2.3 W |
| Power non-maintained | 0.4 W |
| Ambient Temperature | Maintained -5 °C to 40 °C / Non Maintained -5 °C to 40 °C |
| Depth | 36 mm |
| Diameter | 100 mm |
| Connection cross-section | Up to 2.5 mm² |
| Switching input | Yes |
| Emergency light blocking | No |
| Battery Connection | Pluggable Connector |
| Dimming Function | Yes |
| Luminous Flux Mains | 130 lm |
| Luminous Flux Emergency | 250 lm |

CEILING OR WALL MOUNTED EMERGENCY LIGHT



IP54

5 YEAR WARRANTY

3 HOUR BATTERY

DIMMABLE

MAINTANED OR NON MAINTAINED OPERATION

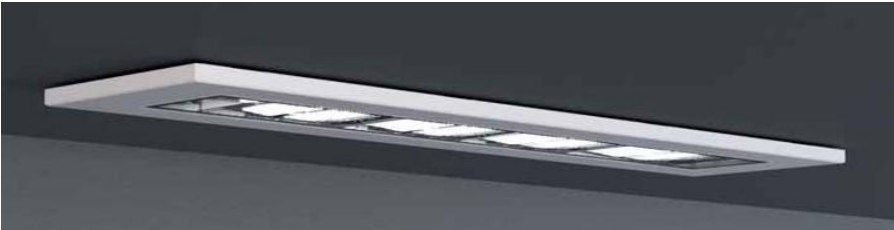
INSULATION CLASS 2

Part Reference: KMB413WL
Self-contained emergency light

A compact safety luminaire designed for universal application. The slim, rectangular polycarbonate housing is reduced to its essential form, providing a discreet and unobtrusive appearance. Integrated optics within the surround ensure effective illumination of escape and emergency routes, supporting clear guidance in critical situations.

The luminaire offers true installation flexibility, allowing for surface mounting on ceilings or recessed installation when used in conjunction with the dedicated mounting frame, part reference KME-EB. This versatility makes it suitable for a wide range of building types and layouts while maintaining a consistent and professional finish throughout.

Flush Mounting Kit - Part Reference: KME-EB



| TECHNICAL DATA | |
|--------------------------|--|
| Luminaire type | Emergency Light |
| Mounting | Ceiling – Surface or Flush |
| Pictograph | No |
| Illuminant | LED |
| Housing material | Polycarbonate |
| Housing color | White |
| Protection type (IP) | IP54 |
| Impact resistance (IK) | 6 |
| Certification | WEEE, CE, 5 years warranty |
| Insulation class | 2 |
| Supply | Self-contained |
| Monitoring | Wireless Professional (WL) |
| Battery Duration | 3 h |
| Battery | LiFePO4 3,2 V/3,3 Ah |
| Operating mode | Non-maintained or maintained |
| Input voltage AC | 230 V |
| Input frequency | 50 / 60 Hz |
| Power max. | 5.3 W |
| Power maintained | 3.9 W |
| Power non-maintained | 1.5 W |
| Ambient Temperature | Maintained -10 °C to 40 °C / Non Maintained -5 °C to 40 °C |
| Depth | 50 mm |
| Height | 34 mm |
| Width | 250 mm |
| Connection cross-section | Up to 2.5 mm² |
| Switching input | Yes |
| Emergency light blocking | Yes |
| Battery Connection | Pluggable Connector |
| Dimming Function | Yes |
| Luminous Flux Mains | 190 lm |
| Luminous Flux Emergency | 190 lm |

CEILING OR WALL MOUNTED EMERGENCY LIGHT



IP54

5 YEAR WARRANTY

3 HOUR BATTERY

DIMMABLE

MAINTANED OR NON MAINTAINED OPERATION

INSULATION CLASS 2

Part Reference: KCW423WL
Self-contained emergency light

A slim, convex polycarbonate luminaire with a refined, unobtrusive profile, designed to integrate seamlessly into modern buildings.

This emergency luminaire is intended for either wall or ceiling mounting and ensures a clean appearance and straightforward on-site installation.

| TECHNICAL DATA | |
|--------------------------|---|
| Luminaire type | Emergency Light |
| Mounting | Wall or Ceiling |
| Pictograph | No |
| Illuminant | LED |
| Housing material | Polycarbonate |
| Housing color | White |
| Protection type (IP) | IP54 |
| Impact resistance (IK) | 6 |
| Certification | WEEE, CE, 5 years warranty |
| Insulation class | 2 |
| Supply | Self-contained |
| Monitoring | Wireless Professional (WL) |
| Battery Duration | 3 h |
| Battery | LiFePO4 3,2 V/3,3 Ah |
| Operating mode | Non-maintained or maintained |
| Input voltage AC | 230 V |
| Input frequency | 50 / 60 Hz |
| Power max. | 7.5 W |
| Power maintained | 5.7 W |
| Power non-maintained | 0.8 W |
| Ambient Temperature | Maintained -5 °C to 40 °C / Non Maintained -5 °C to 40 °C |
| Depth | 60 mm |
| Height | 170 mm |
| Width | 340 mm |
| Connection cross-section | Up to 2.5 mm² |
| Switching input | Yes |
| Emergency light blocking | Yes |
| Battery Connection | Pluggable Connector |
| Dimming Function | Yes |
| Luminous Flux Mains | 250 lm |
| Luminous Flux Emergency | 520 lm |

CEILING OR WALL MOUNTED EMERGENCY LIGHT



IP65

5 YEAR WARRANTY

3 HOUR BATTERY

DIMMABLE

MAINTANED OR NON MAINTAINED OPERATION

INSULATION CLASS 2

Part Reference: PMW423WL
Self-contained emergency light

A slim, convex polycarbonate luminaire with a refined, unobtrusive profile, designed to integrate seamlessly into modern buildings.

This emergency luminaire is intended for either wall or ceiling mounting and ensures a clean appearance and straightforward on-site installation.

| TECHNICAL DATA | |
|--------------------------|---|
| Luminaire type | Emergency Light |
| Mounting | Wall or Ceiling |
| Pictograph | No |
| Illuminant | LED |
| Housing material | Polycarbonate |
| Housing color | White |
| Protection type (IP) | IP65 |
| Impact resistance (IK) | 6 |
| Certification | WEEE, CE, 5 years warranty |
| Insulation class | 2 |
| Supply | Self-contained |
| Monitoring | Wireless Professional (WL) |
| Battery Duration | 3 h |
| Battery | LiFePO4 3,2 V/3,3 Ah |
| Operating mode | Non-maintained or maintained |
| Input voltage AC | 230 V |
| Input frequency | 50 / 60 Hz |
| Power max. | 7.5 W |
| Power maintained | 5.7 W |
| Power non-maintained | 0.8 W |
| Ambient Temperature | Maintained -5 °C to 40 °C / Non Maintained -5 °C to 40 °C |
| Depth | 65 mm |
| Height | 136 mm |
| Width | 236 mm |
| Connection cross-section | Up to 2.5 mm² |
| Switching input | Yes |
| Emergency light blocking | Yes |
| Battery Connection | Pluggable Connector |
| Dimming Function | Yes |
| Luminous Flux Mains | 250 lm |
| Luminous Flux Emergency | 520 lm |

PERFORMANCE SERIES

SURFACE EMERGENCY LIGHT



White



Anodised Aluminium

IP20

5 YEAR WARRANTY

3 HOUR BATTERY

DIMMABLE

MAINTANED OR NON MAINTAINED OPERATION

INSULATION CLASS 2

Self-contained emergency light

A round aluminium LED luminaire designed as a versatile general-purpose fitting with an integrated emergency lighting function for the illumination of escape and emergency routes.

Combining everyday lighting with dependable emergency operation, this luminaire provides a seamless solution for both normal and critical conditions. Its clean, contemporary form allows it to integrate effortlessly into a wide range of interior settings. The fitting is available in white or anodised aluminium finishes, offering flexibility to suit both neutral and architectural design schemes.

Suitable for surface mounting on walls or ceilings, the luminaire delivers consistent, efficient illumination while ensuring that escape routes remain clearly visible in the event of a power failure.

| TECHNICAL DATA | |
|--------------------------|---|
| Luminaire type | Emergency Light |
| Mounting | Wall or Ceiling |
| Pictograph | No |
| Illuminant | LED |
| Housing material | Aluminium |
| Housing color | White / Anodised Aluminium |
| Protection type (IP) | IP20 |
| Impact resistance (IK) | ≥ 3 |
| Certification | WEEE, CE, 5 years warranty |
| Insulation class | 1 |
| Supply | Self-contained |
| Monitoring | Wireless Professional (WL) |
| Battery Duration | 3 h |
| Battery | LiFePO4 3,2 V/3,3 Ah |
| Operating mode | Non-maintained or maintained |
| Input voltage AC | 230 V |
| Input frequency | 50 / 60 Hz |
| Power max. | 30 W |
| Power maintained | 26.4 W |
| Power non-maintained | 0.4 W |
| Ambient Temperature | Maintained -5 °C to 30 °C / Non Maintained -5 °C to 35 °C |
| Depth | 113 mm |
| Diameter | 395 mm |
| Connection cross-section | Up to 2.5 mm² |
| Switching input | Yes |
| Emergency light blocking | No |
| Battery Connection | Pluggable Connector |
| Dimming Function | Yes |
| Luminous flux mains | 2300 lm |
| Luminous flux emergency | 250 lm |

| PART REFERENCE | |
|----------------|--------------------|
| WHITE | ANODISED ALUMINIUM |
| QAW423WL | QAW423WL-SI |

PERFORMANCE SERIES

TWIN SPOT EMERGENCY LIGHT



IP54

5 YEAR WARRANTY

3 HOUR BATTERY

Part Reference: SKS2103WL

A compact twin-spot emergency floodlight featuring a robust metal housing and two independently adjustable lamp heads, providing reliable, targeted illumination in critical situations.

Designed for non-maintained operation, this unit delivers powerful emergency lighting precisely where it is required, making it ideal for escape routes, plant rooms and open areas.

Suitable for indoor use and, subject to site conditions, for external applications, the luminaire offers a durable and dependable solution across a wide range of environments.

The range is available in several sizes to suit different project requirements, with alternative formats and outputs available upon request.

| TECHNICAL DATA | |
|--------------------------|-------------------------------|
| Luminaire type | Emergency Light |
| Mounting | Wall |
| Pictograph | No |
| Illuminant | LED |
| Housing material | Metal |
| Housing color | Light Grey |
| Protection type (IP) | IP54 |
| Impact resistance (IK) | ≥ 3 |
| Certification | WEEE, CE, 5 years warranty |
| Insulation class | 1 |
| Supply | Self-contained |
| Monitoring | Wireless Professional (WL) |
| Battery Duration | 3 h |
| Battery | AGM - OGIV 12V 12 V/7 Ah |
| Operating mode | Non-maintained |
| Input voltage AC | 230 V |
| Input frequency | 50 / 60 Hz |
| Power max. | 11.5 W |
| Power non-maintained | 9.2 W |
| Ambient Temperature | Non Maintained -5 °C to 40 °C |
| Depth | 120 mm |
| Height | 300 mm |
| Width | 300 mm |
| Connection cross-section | Up to 2.5 mm² |
| Switching input | No |
| Emergency light blocking | No |
| Battery Connection | Clip |
| Dimming Function | No |
| Luminous Flux Emergency | 2 x 900 lm |

PERFORMANCE SERIES

UNIVERSAL MOUNTED EXIT SIGN



IP65

5 YEAR WARRANTY

3 HOUR BATTERY

DIMMABLE

MAINTANED OR NON-MAINTAINED OPERATION

INSULATION CLASS 2

VIEWING DISTANCE 22M OR 30M

Self-contained emergency exit sign

A cuboid polycarbonate luminaire, reduced to its essential form for a clean and discreet appearance, with a 22-metre viewing distance for clear visibility in escape route applications. The edge for retaining the escape sign is permanently integrated, creating a compact and robust solution.

Each luminaire is fitted with modern LED light sources and offers flexibility through interchangeable pictograms. Its high level of protection allows for reliable use in damp areas and in environments subject to heavy soiling. This display-edge luminaire features integrated light distribution to ensure even illumination of the pictogram and is suitable for single or double-sided signage. On-site flexibility is ensured through tool-free insertion and replacement of pictograms, providing certainty at the planning stage.

A standard pictogram set in accordance with DIN ISO 7010 is supplied, including arrows pointing left, right, up and down. Universal mounting allows the luminaire to be installed on either walls or ceilings.

| TECHNICAL DATA | | |
|--------------------------|---|--------|
| Luminaire type | Emergency Exit Sign | |
| Mounting | Universal (Wall, Ceiling or Suspended) | |
| Pictograph | Yes (Right, Left, Up & Down Included) | |
| Illuminant | LED | |
| Housing material | Polycarbonate | |
| Housing color | White | |
| Protection type (IP) | IP65 | |
| Impact resistance (IK) | 7 | |
| Certification | WEEE, CE, 5 years warranty | |
| Insulation class | 2 | |
| Supply | Self-contained | |
| Monitoring | Wireless Professional (WL) | |
| Battery Duration | 3 h | |
| Battery | LiFePO4 3,2 V/1,2 Ah | |
| Operating mode | Non-maintained or maintained | |
| Input voltage AC | 230 V | |
| Input frequency | 50 / 60 Hz | |
| Ambient Temperature | Maintained -5 °C to 40 °C / Non Maintained -5 °C to 40 °C | |
| Viewing Distance | 22M | 30M |
| Depth | 50 mm | 50 mm |
| Height | 204 mm | 248 mm |
| Width | 326 mm | 326 mm |
| Power max. | 4.7 W | 5.6 W |
| Power maintained | 3.5 W | 4.5 W |
| Power non-maintained | 0.8 W | 0.8 W |
| Connection cross-section | Up to 2.5 mm² | |
| Switching input | Yes | |
| Emergency light blocking | Yes | |
| Battery Connection | Pluggable Connector | |
| Dimming Function | Yes | |

| PART REFERENCE | |
|----------------------|----------------------|
| 22M VIEWING DISTANCE | 30M VIEWING DISTANCE |
| KAMU403WL | KAXU403WL |

PERFORMANCE SERIES

UNIVERSAL MOUNTED BOX EXIT SIGN



| | | |
|----------|---------------------------------------|-----------------------------|
| IP43 | 5 YEAR WARRANTY | 3 HOUR BATTERY |
| DIMMABLE | MAINTANED OR NON-MAINTAINED OPERATION | INSULATION CLASS 2 |
| | | VIEWING DISTANCE 22M OR 34M |

Self-contained emergency exit sign

A modern, box-style polycarbonate exit sign with a clean, unobtrusive profile, designed to integrate seamlessly into contemporary buildings.

Suitable for both ceiling and wall mounting, this emergency exit sign features internally fitted plug-in pictograms for a neat appearance and straightforward on-site installation.

Tool-free, on-site interchangeability of pictograms ensures full planning flexibility and certainty. A standard pictogram set in accordance with DIN ISO 7010 is supplied, including arrows pointing left, right, up and down, allowing the luminaire to be easily adapted to changing escape route requirements.

Available in 22M and 34M viewing distance variants

| PART REFERENCE | |
|----------------------|----------------------|
| 22M VIEWING DISTANCE | 30M VIEWING DISTANCE |
| KDU413WL | KLU413WL |

| TECHNICAL DATA | | |
|--------------------------|---|--------|
| Luminaire type | Emergency Exit Sign | |
| Mounting | Universal (Wall, Ceiling or Suspended) | |
| Pictograph | Yes (Right, Left, Up & Down Included) | |
| Illuminant | LED | |
| Housing material | Polycarbonate | |
| Housing color | White | |
| Protection type (IP) | IP43 | |
| Impact resistance (IK) | 7 | |
| Certification | WEEE, CE, 5 years warranty | |
| Insulation class | 2 | |
| Supply | Self-contained | |
| Monitoring | Wireless Professional (WL) | |
| Battery Duration | 3 h | |
| Battery | LiFePO4 3,2 V/ (1,2 Ah – 22M) (1,6 Ah – 34M) | |
| Operating mode | Non-maintained or maintained | |
| Input voltage AC | 230 V | |
| Input frequency | 50 / 60 Hz | |
| Ambient Temperature | Maintained -5 °C to 40 °C / Non Maintained -5 °C to 40 °C | |
| Viewing Distance | 22M | 34M |
| Depth | 70 mm | 78 mm |
| Height | 155 mm | 220 mm |
| Width | 260 mm | 390 mm |
| Power max. | 4.7 W | 5.3 W |
| Power maintained | 3.5 W | 4.3 W |
| Power non-maintained | 0.8 W | 0.7 W |
| Luminous Flux Mains | | 130 lm |
| Luminous Flux Emergency | | 250 lm |
| Connection cross-section | Up to 2.5 mm ² | |
| Switching input | Yes | |
| Emergency light blocking | Yes | |
| Battery Connection | Pluggable Connector | |
| Dimming Function | Yes | |

PERFORMANCE SERIES

WALL MOUNTED EXIT SIGN – 30M



| | | |
|----------|---------------------------------------|--------------------|
| IP54 | 5 YEAR WARRANTY | 3 HOUR BATTERY |
| DIMMABLE | MAINTANED OR NON-MAINTAINED OPERATION | INSULATION CLASS 2 |

Part Reference: KCW413WL
Self-contained emergency exit sign

A slim, convex polycarbonate luminaire with a refined, unobtrusive profile, designed to integrate seamlessly into modern buildings.

This emergency exit sign is intended for wall mounting, with the supplied plug-in pictograms fitted internally to ensure a clean appearance and straightforward on-site installation.

Tool-free, on-site interchangeability of pictograms provides full planning flexibility and certainty.

A standard pictogram set in accordance with DIN ISO 7010 is supplied, including arrows pointing left, right, up and down, allowing the luminaire to be quickly adapted to changing escape route requirements.

| TECHNICAL DATA | |
|--------------------------|---|
| Luminaire type | Emergency Exit Sign |
| Mounting | Wall |
| Pictograph | Yes (Right, Left, Up & Down Included) |
| Illuminant | LED |
| Housing material | Polycarbonate |
| Housing color | White |
| Protection type (IP) | IP54 |
| Impact resistance (IK) | 6 |
| Certification | WEEE, CE, 5 years warranty |
| Insulation class | 2 |
| Supply | Self-contained |
| Monitoring | Wireless Professional (WL) |
| Battery Duration | 3 h |
| Battery | LiFePO4 3,2 V/1,2 Ah |
| Operating mode | Non-maintained or maintained |
| Input voltage AC | 230 V |
| Input frequency | 50 / 60 Hz |
| Power max. | 5.3 W |
| Power maintained | 4.3 W |
| Power non-maintained | 0.7 W |
| Ambient Temperature | Maintained -5 °C to 40 °C / Non Maintained -5 °C to 40 °C |
| Depth | 60 mm |
| Height | 170 mm |
| Width | 340 mm |
| Connection cross-section | Up to 2.5 mm² |
| Switching input | Yes |
| Emergency light blocking | Yes |
| Battery Connection | Pluggable Connector |
| Dimming Function | Yes |
| Luminous Flux Mains | 305 lm |
| Luminous Flux Emergency | 180 lm |

PERFORMANCE SERIES

WALL MOUNTED EXIT SIGN – 20M



| | | |
|----------|---------------------------------------|--------------------|
| IP65 | 5 YEAR WARRANTY | 3 HOUR BATTERY |
| DIMMABLE | MAINTANED OR NON-MAINTAINED OPERATION | INSULATION CLASS 2 |

Part Reference: PMW403WL
Self-contained emergency exit sign

A slim, convex polycarbonate luminaire with a refined, unobtrusive profile, designed to integrate seamlessly into modern buildings.

This emergency exit sign is intended for wall mounting, with the supplied plug-in pictograms fitted internally to ensure a clean appearance and straightforward on-site installation.

Tool-free, on-site interchangeability of pictograms provides full planning flexibility and certainty.

A standard pictogram set in accordance with DIN ISO 7010 is supplied, including arrows pointing left, right, up and down, allowing the luminaire to be quickly adapted to changing escape route requirements.

| TECHNICAL DATA | |
|--------------------------|---|
| Luminaire type | Emergency Exit Sign |
| Mounting | Wall |
| Pictograph | Yes (Right, Left, Up & Down Included) |
| Illuminant | LED |
| Housing material | Polycarbonate |
| Housing color | White |
| Protection type (IP) | IP65 |
| Impact resistance (IK) | 6 |
| Certification | WEEE, CE, 5 years warranty |
| Insulation class | 2 |
| Supply | Self-contained |
| Monitoring | Wireless Professional (WL) |
| Battery Duration | 3 h |
| Battery | LiFePO4 3,2 V/1,6 Ah |
| Operating mode | Non-maintained or maintained |
| Input voltage AC | 230 V |
| Input frequency | 50 / 60 Hz |
| Power max. | 3.8 W |
| Power maintained | 2.9 W |
| Power non-maintained | 0.8 W |
| Ambient Temperature | Maintained -5 °C to 40 °C / Non Maintained -5 °C to 40 °C |
| Depth | 65 mm |
| Height | 136 mm |
| Width | 236 mm |
| Connection cross-section | Up to 2.5 mm² |
| Switching input | Yes |
| Emergency light blocking | Yes |
| Battery Connection | Pluggable Connector |
| Dimming Function | Yes |

PERFORMANCE SERIES

INDIVIDUAL BATTERY SUPPLY



IP54

5 YEAR
WARRANTY

3 HOUR
BATTERY

| TECHNICAL DATA | |
|----------------------|----------------------------|
| Housing material | Metal |
| Housing color | Light Grey |
| Protection type (IP) | IP54 |
| Certification | WEEE, CE, 5 years warranty |
| Insulation class | 1 |
| Monitoring | Wireless Professional (WL) |
| Battery Duration | 3 h |
| Operating mode | Non-maintained |
| Input voltage AC | 230 V |
| Input frequency | 50 / 60 Hz |
| Output Voltage | 230 V |
| Supply Power 3 Hr | 20 W |
| Depth | 210 mm |
| Height | 500 mm |
| Width | 400 mm |

Part Reference: NVGS203WL

The individual battery supply is ideally suited to applications where non-convertible feature lighting is required to incorporate emergency operation. A range of variants is available upon request.

The self-contained power supply delivers a 230V AC sine-wave output via a two-wire system over distances of up to 500 metres, supplying one or two luminaires with fluorescent, incandescent or LED light sources at 100 percent output. It complies with DIN VDE 0108-100 and DIN EN 60598-2-22 and incorporates deep-discharge protection, switch-on lock and threshold switching.

A maintenance-free, long-life rechargeable lead battery provides reliable power, with fully electronic, time-controlled charging to extend battery life. LED status indicators display operating and fault conditions, and a built-in test button enables manual function testing.

In accordance with Irish wiring regulations, the cable between the power supply and the luminaire must be fire-rated to maintain circuit integrity in the event of a fire.



WIRELESS PROFESSIONAL

DESIGN SERIES

RECESSED SQUARE & ROUND EMERGENCY LIGHT



IP20

5 YEAR WARRANTY

3 HOUR BATTERY

DIMMABLE

MAINTANED OR NON MAINTAINED OPERATION

INSULATION CLASS 2

Self-contained emergency light

A high-grade zinc-aluminium safety luminaire designed for recessed ceiling installation.

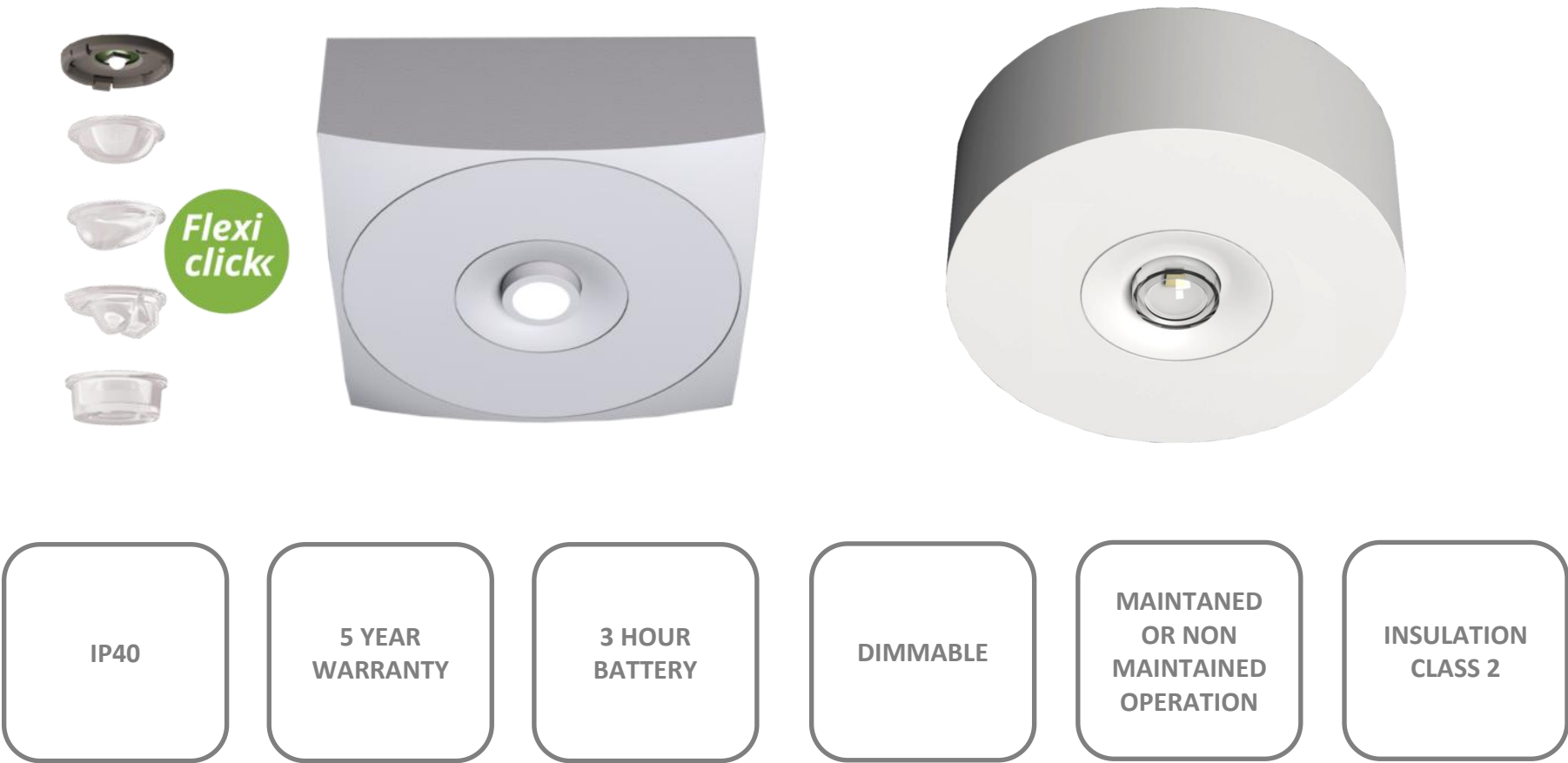
Its compact form allows installation within a standard 68 mm ceiling aperture. In addition to conventional recessed mounting, the luminaire can be fitted into standard back boxes and fire-rated sockets. Fixing is simple and secure, using either tension springs or a screw connection to the mounting box.

An innovative integrated lens holder with a rapid-fit mechanism enables flexible use of a range of lens types. By selecting the appropriate lens, light distribution can be precisely matched to the application, ensuring compliance with all relevant standards. Each luminaire is supplied with a round lens and a hall lens for optimum adaptability on site. Optional lenses, including spotlight, beam and H lenses, are also available. Also available in Anthracite upon request.

| PART REFERENCE | | | |
|----------------|-------------|-------------------|------------------|
| WHITE SQUARE | WHITE ROUND | ANTHRACITE SQUARE | ANTHRACITE ROUND |
| EEQL433WL | EERL433WL | EEQL433WL-AZ | EERL433WL-AZ |

| TECHNICAL DATA | |
|--------------------------|---|
| Luminaire type | Emergency Light |
| Mounting | Ceiling |
| Pictograph | No |
| Illuminant | LED |
| Housing material | High-grade zinc-aluminium |
| Housing color | White / Anthracite |
| Protection type (IP) | IP20 |
| Impact resistance (IK) | ≥ 3 |
| Certification | WEEE, CE, 5 years warranty |
| Insulation class | 2 |
| Supply | Self-contained |
| Monitoring | Wireless Professional (WL) |
| Battery Duration | 3 h |
| Battery | LiFePO4 3,2 V/1,2 Ah |
| Operating mode | Non-maintained or maintained |
| Input voltage AC | 230 V |
| Input frequency | 50 / 60 Hz |
| Power max. | 6.4 W |
| Power maintained | 5.1 W |
| Power non-maintained | 0.8 W |
| Ambient Temperature | Maintained -5 °C to 40 °C / Non Maintained -5 °C to 40 °C |
| Depth | 4 mm |
| Diameter | 88 mm |
| Installation Diameter | 68 mm |
| Connection cross-section | Up to 2.5 mm² |
| Switching input | Yes |
| Emergency light blocking | No |
| Battery Connection | Pluggable Connector |
| Dimming Function | Yes |
| Luminous Flux Mains | 470 lm |
| Luminous Flux Emergency | 195 lm |

SURFACE SQUARE & ROUND EMERGENCY LIGHT



Self-contained emergency light

An LED safety luminaire designed for surface mounting on ceilings, providing reliable illumination of escape and emergency routes.

The discreet zinc-aluminium housing integrates unobtrusively with the ceiling. As the status LED is positioned within the lens, the clean appearance of the luminaire remains uninterrupted. The combination of diffuser optics and high-performance LED ERT technology ensures optimal light distribution and effective escape route illumination.

An innovative integrated lens holder with a rapid-fit mechanism allows flexible use of a range of lens types to suit specific applications. Each luminaire is supplied with a round lens and a hall lens, enabling precise adaptation to the mounting environment. Optional lenses, including spotlight, beam and H lenses, are also available to meet individual project requirements. Also available in Anthracite upon request.

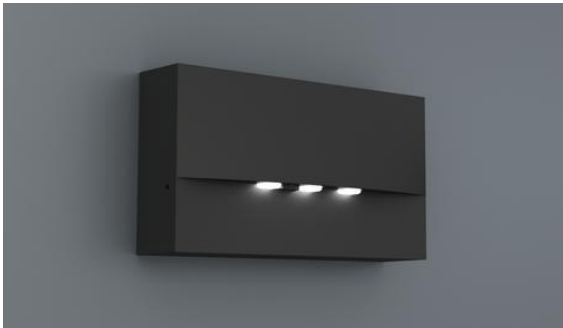
| PART REFERENCE | | | |
|----------------|-------------|-------------------|------------------|
| WHITE SQUARE | WHITE ROUND | ANTHRACITE SQUARE | ANTHRACITE ROUND |
| EAQL433WL | EARL433WL | EAQL433WL-AZ | EARL433WL-AZ |

| TECHNICAL DATA | |
|--------------------------|---|
| Luminaire type | Emergency Light |
| Mounting | Ceiling |
| Pictograph | No |
| Illuminant | LED |
| Housing material | High-grade zinc-aluminium |
| Housing color | White / Anthracite |
| Protection type (IP) | IP40 |
| Impact resistance (IK) | ≥ 3 |
| Certification | WEEE, CE, 5 years warranty |
| Insulation class | 2 |
| Supply | Self-contained |
| Monitoring | Wireless Professional (WL) |
| Battery Duration | 3 h |
| Battery | LiFePO4 3,2 V/3,3 Ah |
| Operating mode | Non-maintained or maintained |
| Input voltage AC | 230 V |
| Input frequency | 50 / 60 Hz |
| Power max. | 3.4 W |
| Power maintained | 2.3 W |
| Power non-maintained | 0.4 W |
| Ambient Temperature | Maintained -5 °C to 40 °C / Non Maintained -5 °C to 40 °C |
| Depth | 39 mm |
| Diameter | 104 mm |
| Installation Diameter | 104 mm |
| Connection cross-section | Up to 2.5 mm² |
| Switching input | Yes |
| Emergency light blocking | No |
| Battery Connection | Pluggable Connector |
| Dimming Function | Yes |
| Luminous Flux Mains | 250 lm |
| Luminous Flux Emergency | 130 lm |

SURFACE OR RECESSED EMERGENCY LIGHT



White



Anthracite



Stainless Steel

IP20

5 YEAR
WARRANTY

3 HOUR
BATTERY

DIMMABLE

MAINTAINED
OR NON
MAINTAINED
OPERATION

INSULATION
CLASS 2

Self-contained emergency light

A high-grade safety luminaire manufactured from zinc die-cast, designed for surface or recessed mounting on walls to provide effective illumination of escape and emergency routes.

The optical distribution is engineered to run parallel to the wall, delivering uniform, glare-controlled light along corridors and walkways to ensure clear guidance in critical situations. In addition to its functional performance, the luminaire is available in white, anthracite and stainless-steel finishes, allowing it to complement both modern and traditional interiors.

These architectural finishes enable the fitting to enhance the visual character of a space while maintaining full compliance with emergency lighting requirements.

| PART REFERENCE | | | |
|----------------|----------|-------------|-----------------|
| VARIANT | WHITE | ANTHRACITE | STAINLESS STEEL |
| SURFACE | WAF423WL | WAF423WL-AZ | WAF423WL-E |
| RECESSED | WEF423WL | WEF423WL-AZ | WEF423WL-E |

| TECHNICAL DATA | | |
|--------------------------|---|----------|
| Luminaire type | Emergency Light | |
| Mounting | Wall | |
| Pictograph | No | |
| Illuminant | LED | |
| Housing material | Modern zinc die-cast | |
| Housing color | White / Anthracite / Stainless Steel | |
| Protection type (IP) | IP20 | |
| Impact resistance (IK) | 4 | |
| Certification | WEEE, CE, 5 years warranty | |
| Insulation class | 2 | |
| Supply | Self-contained | |
| Monitoring | Wireless Professional (WL) | |
| Battery Duration | 3 h | |
| Battery | LiFePO4 3,2 V/1,2 Ah | |
| Operating mode | Non-maintained or maintained | |
| Input voltage AC | 230 V | |
| Input frequency | 50 / 60 Hz | |
| Power max. | 5.1 W | |
| Power maintained | 3.9 W | |
| Power non-maintained | 0.8 W | |
| Ambient Temperature | Maintained -5 °C to 35 °C / Non Maintained -5 °C to 40 °C | |
| Variant | Surface | Recessed |
| Depth | 53 mm | 20 mm |
| Height | 115 mm | 107 mm |
| Width | 193 mm | 161 mm |
| Connection cross-section | Up to 2.5 mm ² | |
| Switching input | Yes | |
| Emergency light blocking | Yes | |
| Battery Connection | Pluggable Connector | |
| Dimming Function | Yes | |
| Luminous flux mains | 420 lm | |
| Luminous flux emergency | 315 lm | |

SURFACE WALL MOUNTED EXIT SIGN



White



Anthracite



Stainless Steel

VIEWING
DISTANCE
22M OR 30M

5 YEAR
WARRANTY

3 HOUR
BATTERY

DIMMABLE

MAINTAINED
OR NON
MAINTAINED
OPERATION

INSULATION
CLASS 2

Self-contained emergency exit sign

A modern emergency exit sign luminaire manufactured from high-quality zinc die-cast, designed for surface wall mounting and for the clear identification of emergency and escape routes.

This luminaire forms part of the A Series family, a comprehensive range offering solutions for virtually every mounting requirement. The series has been recognised with the German Design Award for its consistent, linear design language, delivering a uniform and architecturally refined appearance throughout a building.

Tool-free, on-site interchangeability of pictograms provides full planning flexibility and long-term certainty. A standard pictogram set in accordance with DIN ISO 7010 is supplied, including arrows pointing left, right, up and down, allowing the luminaire to be easily adapted to changing escape route layouts.

| PART REFERENCE | | | |
|------------------|----------|-------------|-----------------|
| VIEWING DISTANCE | WHITE | ANTHRACITE | STAINLESS STEEL |
| 22M | AMW403WL | AMW403WL-AZ | AMW403WL-E |
| 30M | AXW403WL | AXW403WL-AZ | AXW403WL-E |

| TECHNICAL DATA | | |
|--------------------------|---|--------|
| Luminaire type | Emergency Exit Sign | |
| Mounting | Wall | |
| Pictograph | Yes (Right, Left, Up & Down Included) | |
| Illuminant | LED | |
| Housing material | Modern zinc die-cast | |
| Housing color | White / Anthracite / Stainless Steel | |
| Protection type (IP) | IP40 | |
| Impact resistance (IK) | ≥ 3 | |
| Certification | WEEE, CE, 5 years warranty | |
| Insulation class | 2 | |
| Supply | Self-contained | |
| Monitoring | Wireless Professional (WL) | |
| Battery Duration | 3 h | |
| Battery | LiFePO4 3,2 V/1,2 Ah | |
| Operating mode | Non-maintained or maintained | |
| Input voltage AC | 230 V | |
| Input frequency | 50 / 60 Hz | |
| Ambient Temperature | Maintained -5 °C to 40 °C / Non Maintained -5 °C to 40 °C | |
| Viewing Distance | 22m | 30m |
| Depth | 50 mm | 50 mm |
| Height | 151 mm | 194 mm |
| Width | 236 mm | 312 mm |
| Power max. | 4.7 W | 5.6 W |
| Power maintained | 3.5 W | 4.5 W |
| Power non-maintained | 0.8 W | 0.8 W |
| Connection cross-section | Up to 2.5 mm² | |
| Switching input | Yes | |
| Emergency light blocking | Yes | |
| Battery Connection | Pluggable Connector | |
| Dimming Function | Yes | |

RECESSED WALL MOUNTED EXIT SIGN



White



Anthracite



Stainless Steel

VIEWING
DISTANCE
22M OR 30M

5 YEAR
WARRANTY

3 HOUR
BATTERY

DIMMABLE

MAINTAINED
OR NON
MAINTAINED
OPERATION

INSULATION
CLASS 2

Self-contained emergency exit sign

A modern emergency exit sign luminaire manufactured from high-quality zinc die-cast, designed for recessed wall mounting and for the clear identification of emergency and escape routes.

This luminaire forms part of the A Series family, a comprehensive range offering solutions for virtually every mounting requirement. The series has been recognised with the German Design Award for its consistent, linear design language, delivering a uniform and architecturally refined appearance throughout a building.

Tool-free, on-site interchangeability of pictograms provides full planning flexibility and long-term certainty. A standard pictogram set in accordance with DIN ISO 7010 is supplied, including arrows pointing left, right, up and down, allowing the luminaire to be easily adapted to changing escape route layouts.

| PART REFERENCE | | | |
|------------------|----------|-------------|-----------------|
| VIEWING DISTANCE | WHITE | ANTHRACITE | STAINLESS STEEL |
| 22M | AMR403WL | AMR403WL-AZ | AMR403WL-E |
| 30M | AXR403WL | AXR403WL-AZ | AXR403WL-E |

| TECHNICAL DATA | | |
|--------------------------|---|--------|
| Luminaire type | Emergency Exit Sign | |
| Mounting | Wall | |
| Pictograph | Yes (Right, Left, Up & Down Included) | |
| Illuminant | LED | |
| Housing material | Modern zinc die-cast | |
| Housing color | White / Anthracite / Stainless Steel | |
| Protection type (IP) | IP40 | |
| Impact resistance (IK) | ≥ 3 | |
| Certification | WEEE, CE, 5 years warranty | |
| Insulation class | 2 | |
| Supply | Self-contained | |
| Monitoring | Wireless Professional (WL) | |
| Battery Duration | 3 h | |
| Battery | LiFePO4 3,2 V/1,2 Ah | |
| Operating mode | Non-maintained or maintained | |
| Input voltage AC | 230 V | |
| Input frequency | 50 / 60 Hz | |
| Ambient Temperature | Maintained -5 °C to 40 °C / Non Maintained -5 °C to 40 °C | |
| Viewing Distance | 22m | 30m |
| Depth | 80 mm | 80 mm |
| Height | 151 mm | 238 mm |
| Width | 236 mm | 312 mm |
| Power max. | 4.7 W | 5.6 W |
| Power maintained | 3.5 W | 4.5 W |
| Power non-maintained | 0.8 W | 0.8 W |
| Connection cross-section | Up to 2.5 mm² | |
| Switching input | Yes | |
| Emergency light blocking | Yes | |
| Battery Connection | Pluggable Connector | |
| Dimming Function | Yes | |

SURFACE CEILING MOUNTED EXIT SIGN



White



Anthracite



Stainless Steel

VIEWING
DISTANCE
22M OR 30M

5 YEAR
WARRANTY

3 HOUR
BATTERY

DIMMABLE

MAINTAINED
OR NON
MAINTAINED
OPERATION

INSULATION
CLASS 2

Self-contained emergency exit sign

A modern emergency exit sign luminaire manufactured from high-quality zinc die-cast, designed for ceiling surface mounting and for the clear identification of emergency and escape routes.

This luminaire forms part of the A Series family, a comprehensive range offering solutions for virtually every mounting requirement. The series has been recognised with the German Design Award for its consistent, linear design language, delivering a uniform and architecturally refined appearance throughout a building.

Tool-free, on-site interchangeability of pictograms provides full planning flexibility and long-term certainty. A standard pictogram set in accordance with DIN ISO 7010 is supplied, including arrows pointing left, right, up and down, allowing the luminaire to be easily adapted to changing escape route layouts.

| PART REFERENCE | | | |
|------------------|----------|-------------|-----------------|
| VIEWING DISTANCE | WHITE | ANTHRACITE | STAINLESS STEEL |
| 22M | AMD403WL | AMD403WL-AZ | AMD403WL-E |
| 30M | AXD403WL | AXD403WL-AZ | AXD403WL-E |

| TECHNICAL DATA | | |
|--------------------------|---|--------|
| Luminaire type | Emergency Exit Sign | |
| Mounting | Wall | |
| Pictograph | Yes (Right, Left, Up & Down Included) | |
| Illuminant | LED | |
| Housing material | Modern zinc die-cast | |
| Housing color | White / Anthracite / Stainless Steel | |
| Protection type (IP) | IP40 | |
| Impact resistance (IK) | ≥ 3 | |
| Certification | WEEE, CE, 5 years warranty | |
| Insulation class | 2 | |
| Supply | Self-contained | |
| Monitoring | Wireless Professional (WL) | |
| Battery Duration | 3 h | |
| Battery | LiFePO4 3,2 V/1,2 Ah | |
| Operating mode | Non-maintained or maintained | |
| Input voltage AC | 230 V | |
| Input frequency | 50 / 60 Hz | |
| Ambient Temperature | Maintained -5 °C to 40 °C / Non Maintained -5 °C to 40 °C | |
| Viewing Distance | 22m | 30m |
| Depth | 80 mm | 80 mm |
| Height | 151 mm | 230 mm |
| Width | 236 mm | 312 mm |
| Power max. | 4.7 W | 5.6 W |
| Power maintained | 3.5 W | 4.5 W |
| Power non-maintained | 0.8 W | 0.8 W |
| Connection cross-section | Up to 2.5 mm² | |
| Switching input | Yes | |
| Emergency light blocking | Yes | |
| Battery Connection | Pluggable Connector | |
| Dimming Function | Yes | |

RECESSED CEILING MOUNTED EXIT SIGN



White



Anthracite



Stainless Steel

VIEWING
DISTANCE
22M OR 30M

5 YEAR
WARRANTY

3 HOUR
BATTERY

DIMMABLE

MAINTAINED
OR NON
MAINTAINED
OPERATION

INSULATION
CLASS 2

Self-contained emergency exit sign

A modern emergency exit sign luminaire manufactured from high-quality zinc die-cast, designed for ceiling recessed mounting and for the clear identification of emergency and escape routes.

This luminaire forms part of the A Series family, a comprehensive range offering solutions for virtually every mounting requirement. The series has been recognised with the German Design Award for its consistent, linear design language, delivering a uniform and architecturally refined appearance throughout a building.

Tool-free, on-site interchangeability of pictograms provides full planning flexibility and long-term certainty. A standard pictogram set in accordance with DIN ISO 7010 is supplied, including arrows pointing left, right, up and down, allowing the luminaire to be easily adapted to changing escape route layouts.

| PART REFERENCE | | | |
|------------------|----------|-------------|-----------------|
| VIEWING DISTANCE | WHITE | ANTHRACITE | STAINLESS STEEL |
| 22M | AME403WL | AME403WL-AZ | AME403WL-E |
| 30M | AXE403WL | AXE403WL-AZ | AXE403WL-E |

| TECHNICAL DATA | | |
|--------------------------|---|--------|
| Luminaire type | Emergency Exit Sign | |
| Mounting | Wall | |
| Pictograph | Yes (Right, Left, Up & Down Included) | |
| Illuminant | LED | |
| Housing material | Modern zinc die-cast | |
| Housing color | White / Anthracite / Stainless Steel | |
| Protection type (IP) | IP40 | |
| Impact resistance (IK) | ≥ 3 | |
| Certification | WEEE, CE, 5 years warranty | |
| Insulation class | 2 | |
| Supply | Self-contained | |
| Monitoring | Wireless Professional (WL) | |
| Battery Duration | 3 h | |
| Battery | LiFePO4 3,2 V/1,2 Ah | |
| Operating mode | Non-maintained or maintained | |
| Input voltage AC | 230 V | |
| Input frequency | 50 / 60 Hz | |
| Ambient Temperature | Maintained -5 °C to 40 °C / Non Maintained -5 °C to 40 °C | |
| Viewing Distance | 22m | 30m |
| Depth | 79 mm | 79 mm |
| Height | 194 mm | 194 mm |
| Width | 236 mm | 312 mm |
| Power max. | 4.7 W | 5.6 W |
| Power maintained | 3.5 W | 4.5 W |
| Power non-maintained | 0.8 W | 0.8 W |
| Diameter Hole | 68 mm | |
| Connection cross-section | Up to 2.5 mm² | |
| Switching input | Yes | |
| Emergency light blocking | Yes | |
| Battery Connection | Pluggable Connector | |
| Dimming Function | Yes | |

SURFACE SUSPENDED CEILING MOUNTED EXIT SIGN



White



Anthracite



Stainless Steel

VIEWING
DISTANCE
22M OR 30M

5 YEAR
WARRANTY

3 HOUR
BATTERY

DIMMABLE

MAINTAINED
OR NON
MAINTAINED
OPERATION

INSULATION
CLASS 2

Self-contained emergency exit sign

A modern emergency exit sign luminaire manufactured from high-quality zinc die-cast, designed for surface suspended ceiling mounting and for the clear identification of emergency and escape routes.

This luminaire forms part of the A Series family, a comprehensive range offering solutions for virtually every mounting requirement. The series has been recognised with the German Design Award for its consistent, linear design language, delivering a uniform and architecturally refined appearance throughout a building.

Tool-free, on-site interchangeability of pictograms provides full planning flexibility and long-term certainty. A standard pictogram set in accordance with DIN ISO 7010 is supplied, including arrows pointing left, right, up and down, allowing the luminaire to be easily adapted to changing escape route layouts.

| PART REFERENCE | | | |
|------------------|-----------|--------------|-----------------|
| VIEWING DISTANCE | WHITE | ANTHRACITE | STAINLESS STEEL |
| 22M | AMDC403WL | AMDC403WL-AZ | AMDC403WL-E |
| 30M | AXDC403WL | AXDC403WL-AZ | AXDC403WL-E |

| TECHNICAL DATA | | |
|--------------------------|---|--------|
| Luminaire type | Emergency Exit Sign | |
| Mounting | Wall | |
| Pictograph | Yes (Right, Left, Up & Down Included) | |
| Illuminant | LED | |
| Housing material | Modern zinc die-cast | |
| Housing color | White / Anthracite / Stainless Steel | |
| Protection type (IP) | IP40 | |
| Impact resistance (IK) | ≥ 3 | |
| Certification | WEEE, CE, 5 years warranty | |
| Insulation class | 2 | |
| Supply | Self-contained | |
| Monitoring | Wireless Professional (WL) | |
| Battery Duration | 3 h | |
| Battery | LiFePO4 3,2 V/1,2 Ah | |
| Operating mode | Non-maintained or maintained | |
| Input voltage AC | 230 V | |
| Input frequency | 50 / 60 Hz | |
| Ambient Temperature | Maintained -5 °C to 40 °C / Non Maintained -5 °C to 40 °C | |
| Viewing Distance | 22m | 30m |
| Depth | 80 mm | 80 mm |
| Height | 194 mm | 194 mm |
| Width | 236 mm | 312 mm |
| Power max. | 4.7 W | 5.6 W |
| Power maintained | 3.5 W | 4.5 W |
| Power non-maintained | 0.8 W | 0.8 W |
| Connection cross-section | Up to 2.5 mm² | |
| Switching input | Yes | |
| Emergency light blocking | Yes | |
| Battery Connection | Pluggable Connector | |
| Dimming Function | Yes | |

RECESSED SUSPENDED CEILING MOUNTED EXIT SIGN



White



Anthracite



Stainless Steel

VIEWING
DISTANCE
22M OR 30M

5 YEAR
WARRANTY

3 HOUR
BATTERY

DIMMABLE

MAINTAINED
OR NON
MAINTAINED
OPERATION

INSULATION
CLASS 2

Self-contained emergency exit sign

A modern emergency exit sign luminaire manufactured from high-quality zinc die-cast, designed for recessed suspended ceiling mounting and for the clear identification of emergency and escape routes.

This luminaire forms part of the A Series family, a comprehensive range offering solutions for virtually every mounting requirement. The series has been recognised with the German Design Award for its consistent, linear design language, delivering a uniform and architecturally refined appearance throughout a building.

Tool-free, on-site interchangeability of pictograms provides full planning flexibility and long-term certainty. A standard pictogram set in accordance with DIN ISO 7010 is supplied, including arrows pointing left, right, up and down, allowing the luminaire to be easily adapted to changing escape route layouts.

| PART REFERENCE | | | |
|------------------|-----------|--------------|-----------------|
| VIEWING DISTANCE | WHITE | ANTHRACITE | STAINLESS STEEL |
| 22M | AMEC403WL | AMEC403WL-AZ | AMEC403WL-E |
| 30M | AXEC403WL | AXEC403WL-AZ | AXEC403WL-E |

| TECHNICAL DATA | | |
|--------------------------|---|--------|
| Luminaire type | Emergency Exit Sign | |
| Mounting | Wall | |
| Pictograph | Yes (Right, Left, Up & Down Included) | |
| Illuminant | LED | |
| Housing material | Modern zinc die-cast | |
| Housing color | White / Anthracite / Stainless Steel | |
| Protection type (IP) | IP40 | |
| Impact resistance (IK) | ≥ 3 | |
| Certification | WEEE, CE, 5 years warranty | |
| Insulation class | 2 | |
| Supply | Self-contained | |
| Monitoring | Wireless Professional (WL) | |
| Battery Duration | 3 h | |
| Battery | LiFePO4 3,2 V/1,2 Ah | |
| Operating mode | Non-maintained or maintained | |
| Input voltage AC | 230 V | |
| Input frequency | 50 / 60 Hz | |
| Ambient Temperature | Maintained -5 °C to 40 °C / Non Maintained -5 °C to 40 °C | |
| Viewing Distance | 22m | 30m |
| Depth | 92 mm | 92 mm |
| Height | 182 mm | 225 mm |
| Width | 236 mm | 312 mm |
| Power max. | 4.7 W | 5.6 W |
| Power maintained | 3.5 W | 4.5 W |
| Power non-maintained | 0.8 W | 0.8 W |
| Diameter Hole | 68 mm | |
| Connection cross-section | Up to 2.5 mm² | |
| Switching input | Yes | |
| Emergency light blocking | Yes | |
| Battery Connection | Pluggable Connector | |
| Dimming Function | Yes | |

SURFACE WALL MOUNTED FLAG EXIT SIGN



White



Anthracite



Stainless Steel

VIEWING
DISTANCE
22M OR 30M

5 YEAR
WARRANTY

3 HOUR
BATTERY

DIMMABLE

MAINTANED
OR NON
MAINTAINED
OPERATION

INSULATION
CLASS 2

Self-contained emergency exit sign

A modern emergency exit sign luminaire manufactured from high-quality zinc die-cast, designed for surface wall mounting and for the clear identification of emergency and escape routes.

This luminaire forms part of the A Series family, a comprehensive range offering solutions for virtually every mounting requirement. The series has been recognised with the German Design Award for its consistent, linear design language, delivering a uniform and architecturally refined appearance throughout a building.

Tool-free, on-site interchangeability of pictograms provides full planning flexibility and long-term certainty. A standard pictogram set in accordance with DIN ISO 7010 is supplied, including arrows pointing left, right, up and down, allowing the luminaire to be easily adapted to changing escape route layouts.

| PART REFERENCE | | | |
|------------------|-----------|--------------|-----------------|
| VIEWING DISTANCE | WHITE | ANTHRACITE | STAINLESS STEEL |
| 22M | AMWA403WL | AMWA403WL-AZ | AMWA403WL-E |
| 30M | AXWA403WL | AXWA403WL-AZ | AXWA403WL-E |

| TECHNICAL DATA | | |
|--------------------------|---|--------|
| Luminaire type | Emergency Exit Sign | |
| Mounting | Wall | |
| Pictograph | Yes (Right, Left, Up & Down Included) | |
| Illuminant | LED | |
| Housing material | Modern zinc die-cast | |
| Housing color | White / Anthracite / Stainless Steel | |
| Protection type (IP) | IP40 | |
| Impact resistance (IK) | ≥ 3 | |
| Certification | WEEE, CE, 5 years warranty | |
| Insulation class | 2 | |
| Supply | Self-contained | |
| Monitoring | Wireless Professional (WL) | |
| Battery Duration | 3 h | |
| Battery | LiFePO4 3,2 V/1,2 Ah | |
| Operating mode | Non-maintained or maintained | |
| Input voltage AC | 230 V | |
| Input frequency | 50 / 60 Hz | |
| Ambient Temperature | Maintained -5 °C to 40 °C / Non Maintained -5 °C to 40 °C | |
| Viewing Distance | 22m | 30m |
| Depth | 80 mm | 80 mm |
| Height | 196 mm | 229 mm |
| Width | 334 mm | 372 mm |
| Power max. | 4.7 W | 5.6 W |
| Power maintained | 3.5 W | 4.5 W |
| Power non-maintained | 0.8 W | 0.8 W |
| Connection cross-section | Up to 2.5 mm² | |
| Switching input | Yes | |
| Emergency light blocking | Yes | |
| Battery Connection | Pluggable Connector | |
| Dimming Function | Yes | |

RECESSED WALL MOUNTED FLAG EXIT SIGN



White



Anthracite



Stainless Steel

VIEWING
DISTANCE
22M OR 30M

5 YEAR
WARRANTY

3 HOUR
BATTERY

DIMMABLE

MAINTANED
OR NON
MAINTAINED
OPERATION

INSULATION
CLASS 2

Self-contained emergency exit sign

A modern emergency exit sign luminaire manufactured from high-quality zinc die-cast, designed for recessed wall mounting and for the clear identification of emergency and escape routes.

This luminaire forms part of the A Series family, a comprehensive range offering solutions for virtually every mounting requirement. The series has been recognised with the German Design Award for its consistent, linear design language, delivering a uniform and architecturally refined appearance throughout a building.

Tool-free, on-site interchangeability of pictograms provides full planning flexibility and long-term certainty. A standard pictogram set in accordance with DIN ISO 7010 is supplied, including arrows pointing left, right, up and down, allowing the luminaire to be easily adapted to changing escape route layouts.

| PART REFERENCE | | | |
|------------------|-----------|--------------|-----------------|
| VIEWING DISTANCE | WHITE | ANTHRACITE | STAINLESS STEEL |
| 22M | AMRA403WL | AMRA403WL-AZ | AMRA403WL-E |
| 30M | AXRA403WL | AXRA403WL-AZ | AXRA403WL-E |

| TECHNICAL DATA | | |
|--------------------------|---|--------|
| Luminaire type | Emergency Exit Sign | |
| Mounting | Wall | |
| Pictograph | Yes (Right, Left, Up & Down Included) | |
| Illuminant | LED | |
| Housing material | Modern zinc die-cast | |
| Housing color | White / Anthracite / Stainless Steel | |
| Protection type (IP) | IP40 | |
| Impact resistance (IK) | ≥ 3 | |
| Certification | WEEE, CE, 5 years warranty | |
| Insulation class | 2 | |
| Supply | Self-contained | |
| Monitoring | Wireless Professional (WL) | |
| Battery Duration | 3 h | |
| Battery | LiFePO4 3,2 V/1,2 Ah | |
| Operating mode | Non-maintained or maintained | |
| Input voltage AC | 230 V | |
| Input frequency | 50 / 60 Hz | |
| Ambient Temperature | Maintained -5 °C to 40 °C / Non Maintained -5 °C to 40 °C | |
| Viewing Distance | 22m | 30m |
| Depth | 80 mm | 80 mm |
| Height | 196 mm | 229 mm |
| Width | 306 mm | 344 mm |
| Power max. | 4.7 W | 5.6 W |
| Power maintained | 3.5 W | 4.5 W |
| Power non-maintained | 0.8 W | 0.8 W |
| Diameter Hole | 68 mm | |
| Connection cross-section | Up to 2.5 mm² | |
| Switching input | Yes | |
| Emergency light blocking | Yes | |
| Battery Connection | Pluggable Connector | |
| Dimming Function | Yes | |

SURFACE WALL EXIT SIGN – 20M



Anthracite



White

IP65

5 YEAR WARRANTY

3 HOUR BATTERY

DIMMABLE

MAINTANED OR NON MAINTAINED OPERATION

INSULATION CLASS 2

Self-contained emergency exit sign

A robust emergency exit sign luminaire manufactured from high-quality zinc die-cast, designed for wall mounting and the clear identification of emergency and escape routes. With an IP65 ingress protection rating and IK08 impact resistance, the luminaire is ideally suited to demanding environments, offering reliable performance in areas exposed to dust, moisture and mechanical impact.

The pictogram is mounted internally and protected behind a transparent cover, ensuring long-term clarity and durability while maintaining a clean, professional appearance.

Tool-free, on-site interchangeability of pictograms provides full planning flexibility and certainty throughout the life of the installation. A standard pictogram set in accordance with DIN ISO 7010 is supplied, including arrows pointing left, right, up and down, allowing the luminaire to be easily adapted to changing escape route layouts.

| TECHNICAL DATA | |
|--------------------------|---|
| Luminaire type | Emergency Light |
| Mounting | Wall |
| Pictograph | Yes (Right, Left, Up & Down Included) |
| Illuminant | LED |
| Housing material | High-grade zinc-aluminium |
| Housing color | White / Anthracite |
| Protection type (IP) | IP65 |
| Impact resistance (IK) | 8 |
| Certification | WEEE, CE, 5 years warranty |
| Insulation class | 1 |
| Supply | Self-contained |
| Monitoring | Wireless Professional (WL) |
| Battery Duration | 3 h |
| Battery | LiFePO4 3,2 V/1,2 Ah |
| Operating mode | Non-maintained or maintained |
| Input voltage AC | 230 V |
| Input frequency | 50 / 60 Hz |
| Power max. | 3.9 W |
| Power maintained | 2.6 W |
| Power non-maintained | 0.8 W |
| Ambient Temperature | Maintained -5 °C to 40 °C / Non Maintained -5 °C to 40 °C |
| Depth | 58 mm |
| Height | 188 mm |
| Width | 262 mm |
| Connection cross-section | Up to 2.5 mm ² |
| Switching input | Yes |
| Emergency light blocking | Yes |
| Battery Connection | Pluggable Connector |
| Dimming Function | Yes |

| PART REFERENCE | |
|----------------|-------------|
| WHITE | ANTHRACITE |
| FMW403WL | FMW403WL-AZ |

WIRELESS PROFESSIONAL

NETWORK EQUIPMENT

NETWORK EQUIPMENT

USB COORDINATOR



| TECHNICAL DATA | |
|----------------|----------------------------|
| Networkable | Yes |
| Material | Polycarbonate |
| Depth | 29 mm |
| Width | 143 mm |
| Height | 22 mm |
| Connectivity | USB |
| Certification | CE, 5 years warranty |
| Monitoring | Wireless Professional (WL) |

Part Reference: WLKOR
Wireless Professional Coordinator

The WLKOR is a wireless PC interface designed for use with the Wireless Professional control software. Operating on the European-approved 868 MHz band, it forms a key component of an emergency lighting monitoring system in accordance with DIN EN 62034, acting as the bridge between the control software and the wireless radio network.

The unit connects via USB and features a relay contact for collective fault signalling, along with three status LEDs for clear visual indication. It is specifically developed for integration within emergency lighting systems, providing reliable communication and system oversight.

Key Features

- 868 MHz wireless communication
- USB interface for direct PC connection
- Relay contact for collective fault output
- Three status LEDs
- Compliant with DIN EN 62034
- For use with emergency lighting systems

Supplied as Standard

- USB Coordinator WLKOR
- USB connection cable
- Velcro mounting strip
- Optional DIN rail adapter with mounting components
- Product information leaflet

Once connected to a local PC, the WLKOR enables the Wireless Professional software to discover, monitor and manage all registered luminaires within the system. The integrated relay contact provides a collective fault signal for connection to external monitoring or building management systems, ensuring fast and reliable fault reporting within safety-critical environments.

WIRELESS PROFESSIONAL CONTROL CENTRE



| TECHNICAL DATA | |
|----------------------|----------------------------|
| Networkable | Yes |
| Mounting | Wall |
| Material | Metal/Polycarbonate |
| Protection type (IP) | IP20 |
| Certification | CE, 5 years warranty |
| Monitoring | Wireless Professional (WL) |
| Input voltage AC | 230 V |
| Input frequency | 50 / 60 Hz |
| Depth | 68 mm |
| Height | 265 mm |
| Width | 294 mm |

Part Reference: WLZENT
Wireless Professional Control Centre

Where a centralised PC is not available within the building, the WLZENT central control unit provides a complete standalone solution for the setup, operation and monitoring of the emergency lighting system. Designed for wall mounting, the WLZENT is straightforward to install and is housed in a robust, service-friendly enclosure with an integrated touchscreen interface.

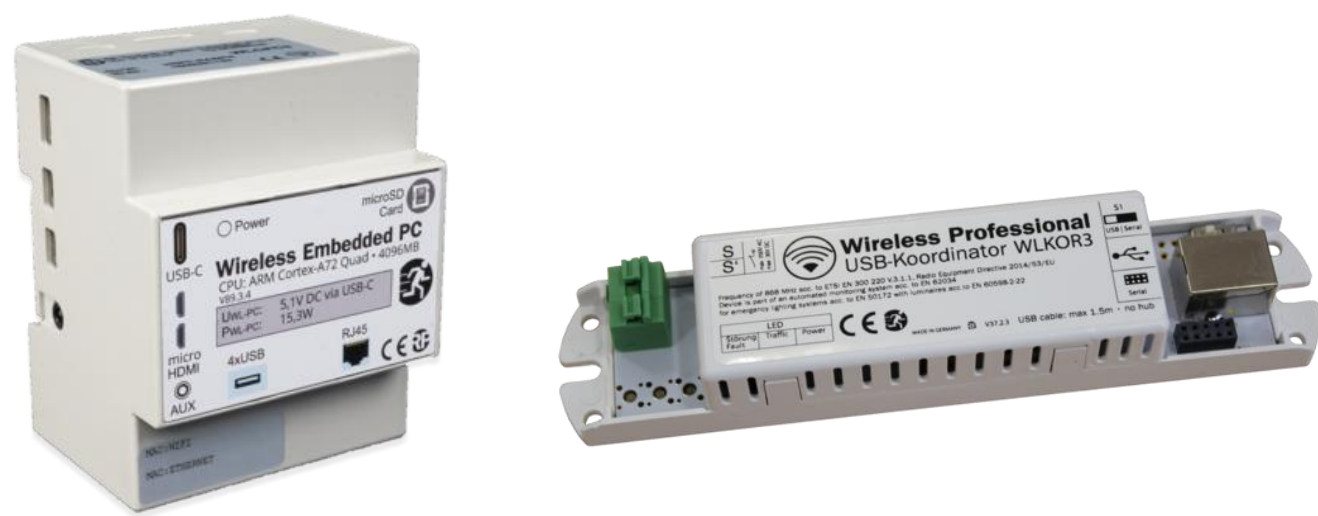
Developed in-house by RP Group and based on an industrial Linux platform, the WLZENT delivers a high level of cyber security with minimal ongoing maintenance. The intuitive user interface presents clear, real-time system information, allowing status and faults to be identified at a glance. The control software supports up to 1,000 wireless devices per control centre as standard.

Intended for installation at a permanently staffed central location, the WLZENT incorporates five programmable timer functions for scheduled operation and automated system management. The unit also supports networking with other systems, providing a scalable and future-ready platform for comprehensive emergency lighting control.



NETWORK EQUIPMENT

WIRELESS EMBEDDED PC



| TECHNICAL DATA | |
|----------------|----------------------------|
| Networkable | Yes |
| Material | Polycarbonate |
| Depth | 72 mm |
| Width | 103 mm |
| Height | 91 mm |
| Connectivity | USB |
| Certification | CE, 5 years warranty |
| Monitoring | Wireless Professional (WL) |

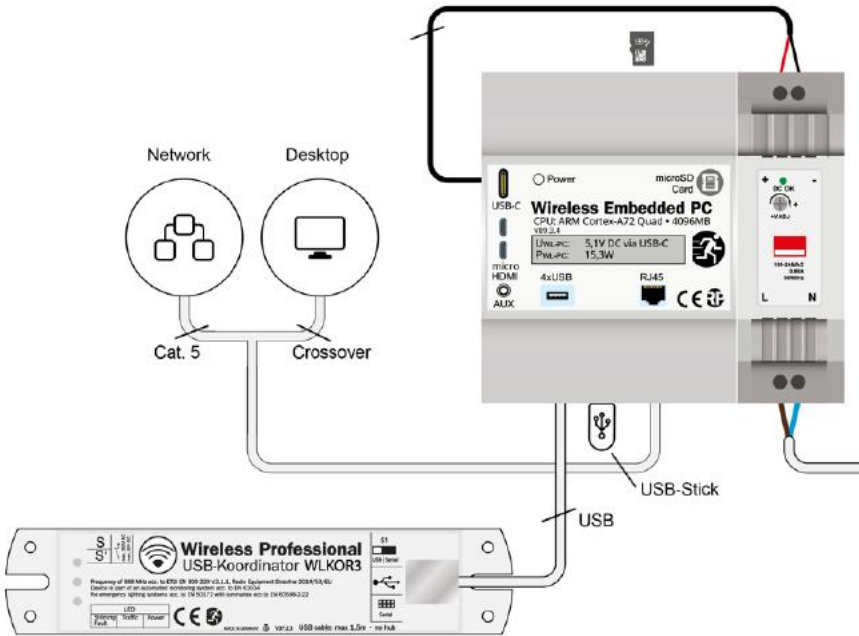
Part Reference: WLCPC
Embedded Linux Computer

For large campuses with multiple buildings, or single large facilities requiring the monitoring and reporting of more than 1,000 luminaires, the WLCPC provides a scalable and robust solution. The system supports installations ranging from 1,001 up to 50,000 emergency luminaires and is specifically designed for complex, high-density environments.

The architecture is based on an embedded, DIN-rail-mounted Linux networked PC (WLCPC), operating in conjunction with a local USB coordinator (WLKOR). Depending on the size, structure and layout of the site, one or multiple WLCPC units can be deployed to ensure reliable coverage and system performance.

Each WLCPC connects to the local area network and is centrally accessible from a designated control PC. This central interface also provides secure access to the Lightlinx cloud platform, enabling comprehensive system monitoring, automated test reporting and long-term performance management across the entire estate.

Where integration with the main building network is not desirable, the system can remain isolated while still maintaining cloud connectivity via a third-party 4G or 5G service. This approach enables remote reporting of system status changes and automated test results without any dependency on the primary IT infrastructure, offering enhanced flexibility and security for building owners.



WIRELESS PROFESSIONAL

OUR SUPPORT SERVICES



DESIGN – We work closely with architects, engineers and contractors to develop compliant, efficient designs that deliver the required technical and operational outcomes.



SUPPLY – We manage the complete logistics process, ensuring all equipment is delivered to site in line with programme requirements.



COMMISSIONING – We provide full system commissioning, ensuring every installation is tested, certified and operating in accordance with the standards.



MAINTENANCE – We offer comprehensive preventative maintenance programmes to protect system performance, compliance and long-term reliability.



TRAINING – We deliver Engineers Ireland approved CPD seminars and professional system installation training for design professionals, contractors and technical teams.



CONTACT US

Entek
Unit 15, Finglas Business Centre,
Jamestown Road, Finglas,
Dublin 11,

 +353 1 891 2680
 info@entek.ie
 www.entek.ie

